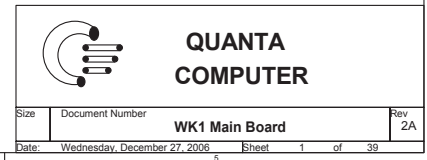
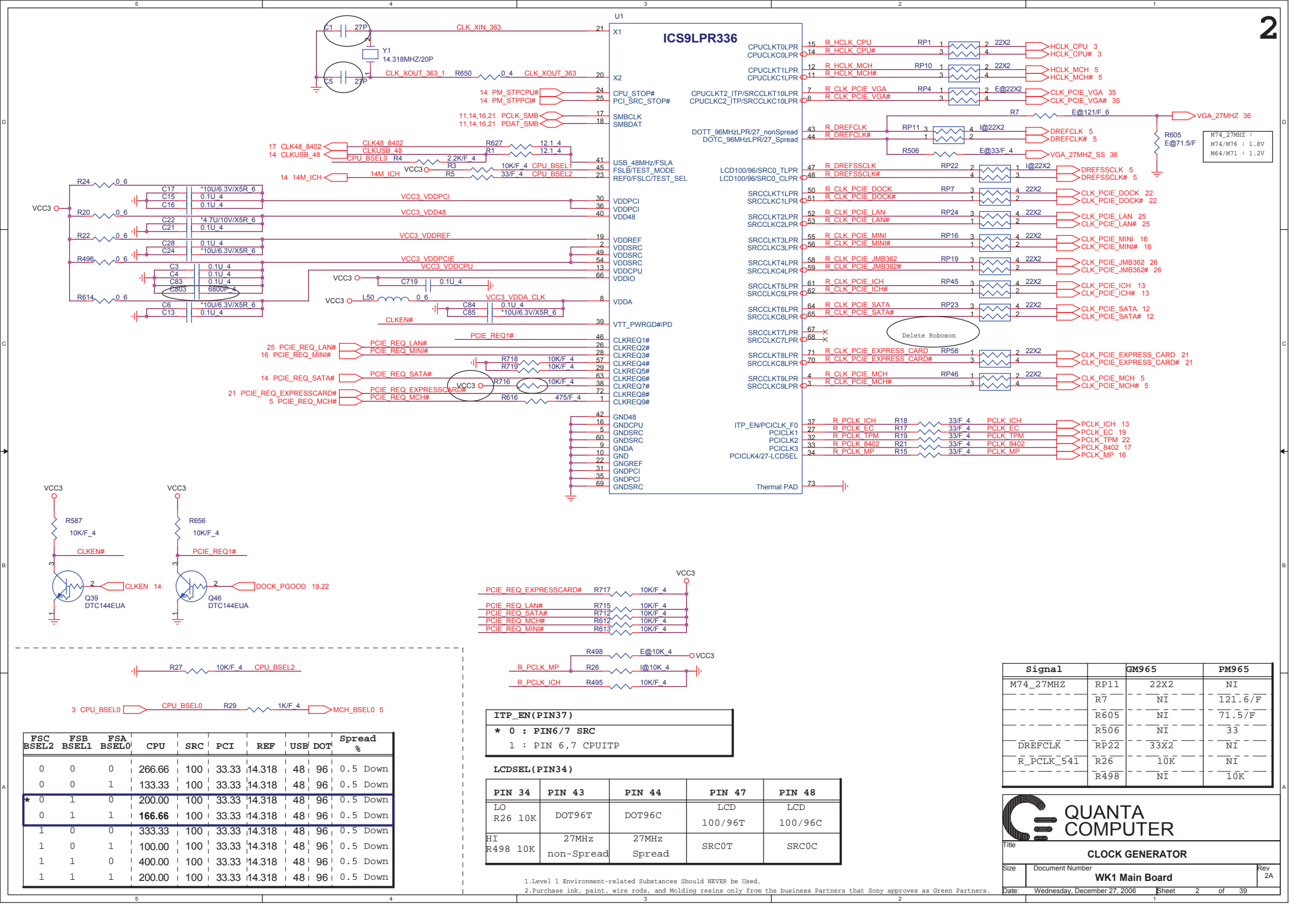
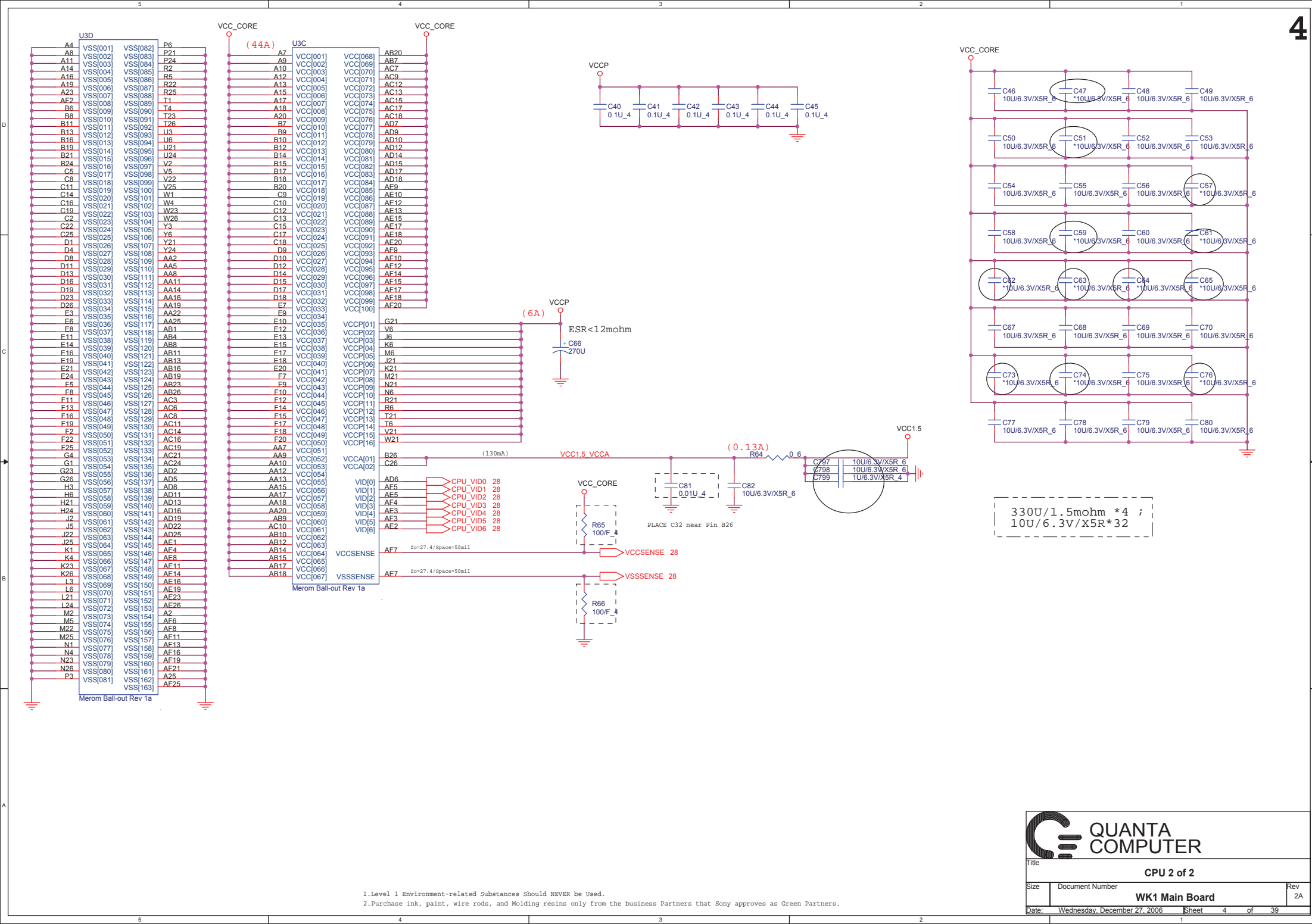
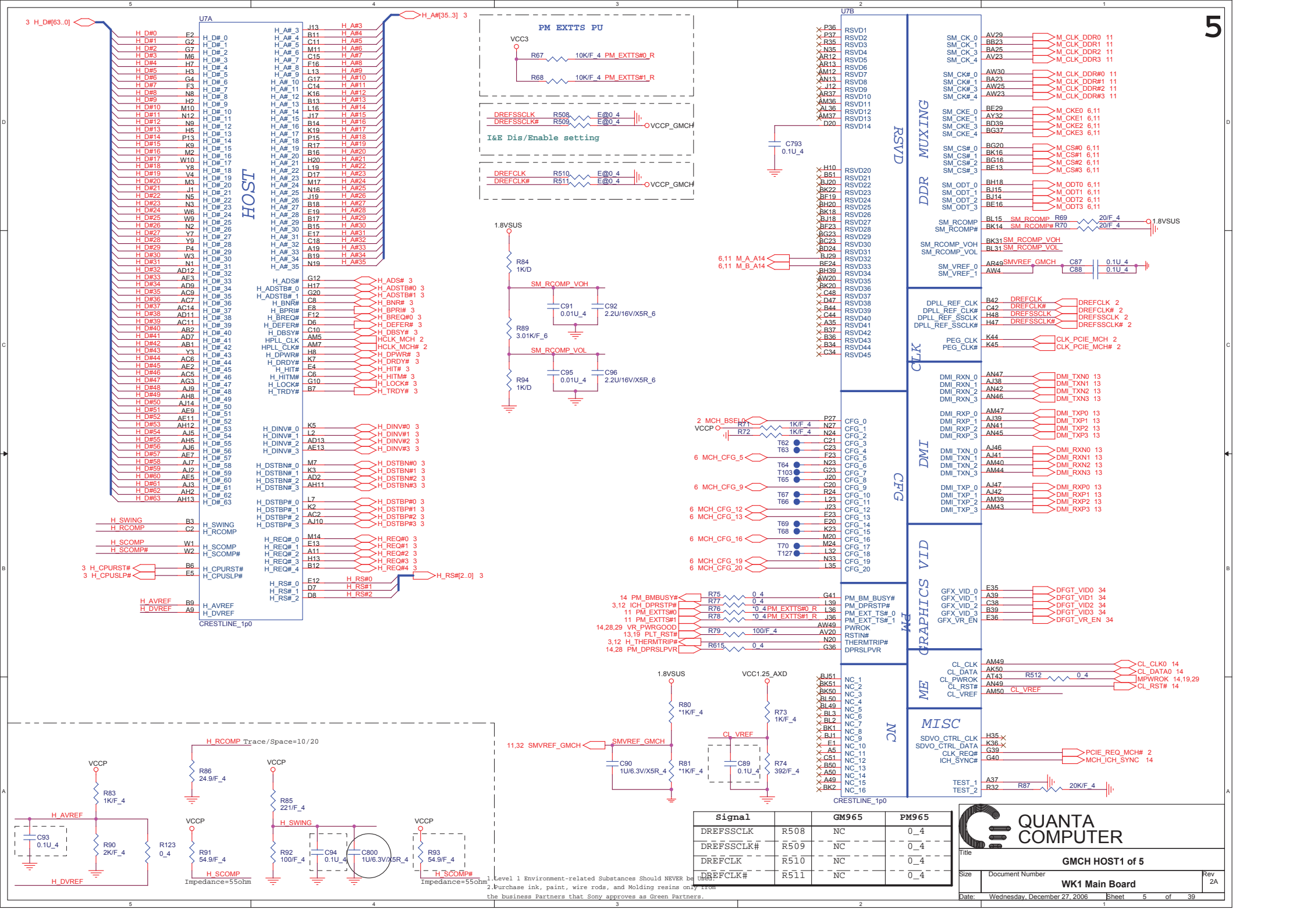


1



[illegible]





Signal Table:

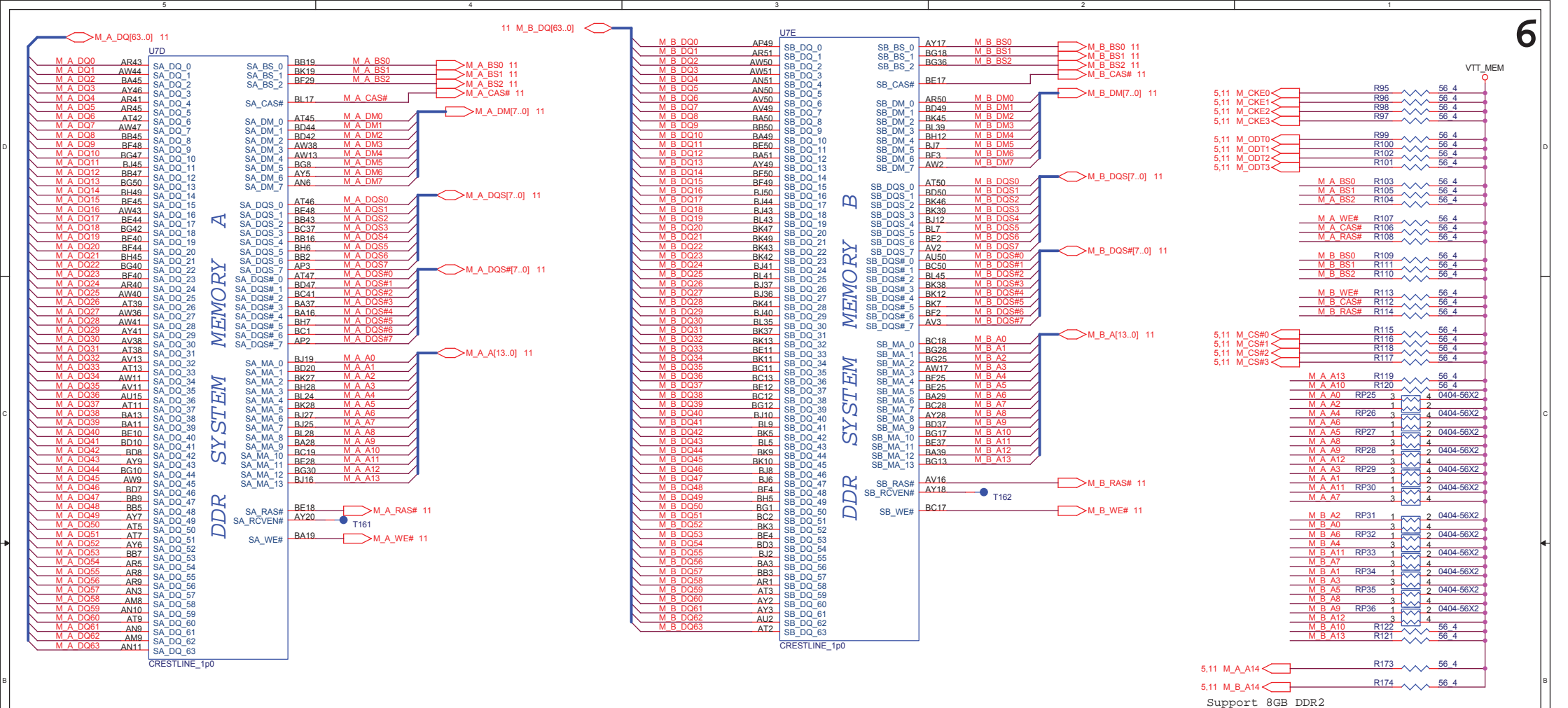
Signal	GM965	PM965
DREFSSCLK	NC	0_4
DREFSSCLK#	NC	0_4
DREFCLK	NC	0_4
DREFCLK#	NC	0_4

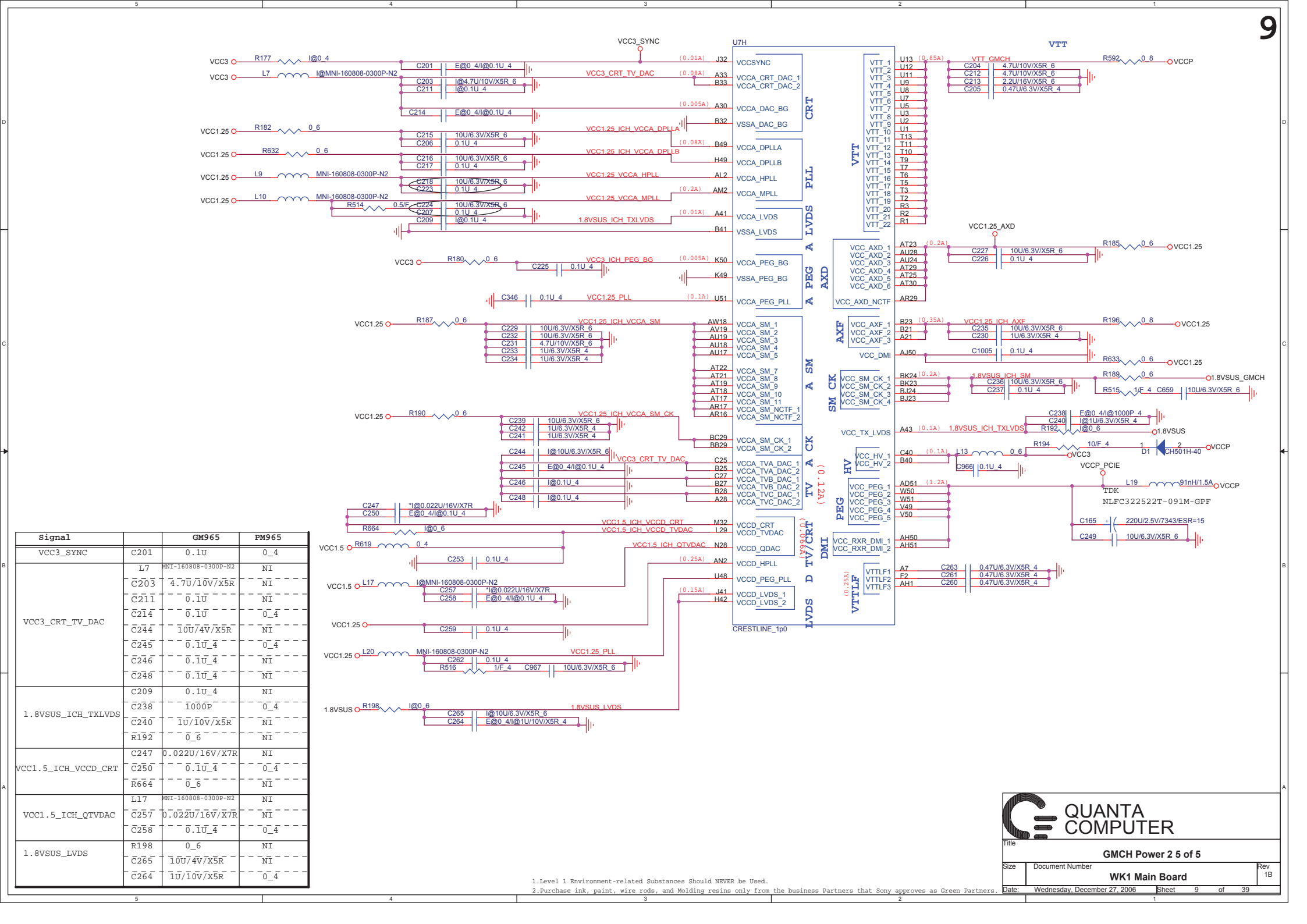
QUANTA COMPUTER

GMCH HOST1 of 5

Size: Document Number: WK1 Main Board Rev 2A

Date: Wednesday, December 27, 2006 Sheet 5 of 39





9

Signal **GM965** **PM965**

Signal	GM965	PM965
VCC3_SYNC	C201 0.1u	0_4
VCC3_CRT_TV_DAC	L7 MNI-160808-0300P-N2	NI
	C203 4.7u/10v/X5R	NI
	C211 0.1u	NI
	C214 0.1u	0_4
	C244 10u/4v/X5R	NI
	C245 0.1u_4	0_4
	C246 0.1u_4	NI
	C248 0.1u_4	NI
1.8VSUS_Ich_TXLVDs	C209 0.1u_4	NI
	C238 1000p	0_4
	C240 1u/10v/X5R	NI
	R192 0_6	NI
VCC1.5_Ich_VCCD_CRT	C247 0.022u/16v/X7R	NI
	C250 0.1u_4	0_4
	R664 0_6	NI
VCC1.5_Ich_QTVDAC	L17 MNI-160808-0300P-N2	NI
	C257 0.022u/16v/X7R	NI
	C258 0.1u_4	0_4
1.8VSUS_LVDS	R198 0_6	NI
	C265 10u/4v/X5R	NI
	C264 1u/10v/X5R	0_4

QUANTA COMPUTER

Title: **GMCH Power 2.5 of 5**

Size: Document Number: **WK1 Main Board** Rev: 1B

Date: Wednesday, December 27, 2006 Sheet: 9 of 39

1.Level 1 Environment-related Substances should NEVER be Used.
2.Purchase ink, paint, wire rods, and Molding resins only from the business Partners that Sony approves as Green Partners.

9

Signal **GM965** **PM965**

Signal	GM965	PM965
VCC3_SYNC	C201 0.1U	0_4
VCC3_CRT_TV_DAC	L7 MNI-160808-0300P-N2	NI
	C203 4.7U/10V/X5R	NI
	C211 0.1U	NI
	C214 0.1U	0_4
	C244 10U/4V/X5R	NI
	C245 0.1U_4	0_4
	C246 0.1U_4	NI
	C248 0.1U_4	NI
1.8VSUS_Ich_TXLVDs	C209 0.1U_4	NI
	C238 1000P	0_4
	C240 1U/10V/X5R	NI
	R192 0_6	NI
VCC1.5_Ich_VCCD_CRT	C247 0.022U/16V/X7R	NI
	C250 0.1U_4	0_4
	R664 0_6	NI
VCC1.5_Ich_QTVDAC	L17 MNI-160808-0300P-N2	NI
	C257 0.022U/16V/X7R	NI
	C258 0.1U_4	0_4
1.8VSUS_LVDS	R198 0_6	NI
	C265 10U/4V/X5R	NI
	C264 1U/10V/X5R	0_4

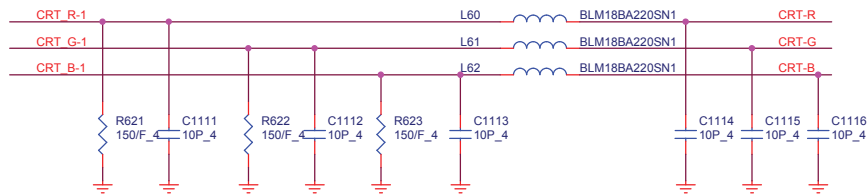
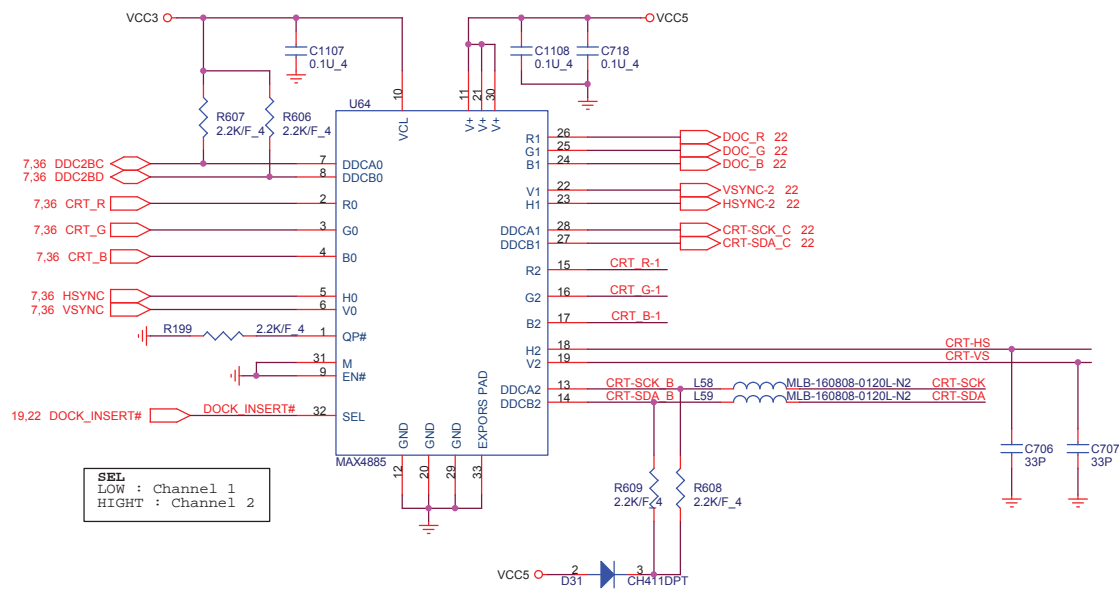
QUANTA COMPUTER

Title: **GMCH Power 2.5 of 5**

Size: Document Number: **WK1 Main Board** Rev: 1B

Date: Wednesday, December 27, 2006 Sheet: 9 of 39

1.Level 1 Environment-related Substances should NEVER be Used.
2.Purchase ink, paint, wire rods, and Molding resins only from the business Partners that Sony approves as Green Partners.

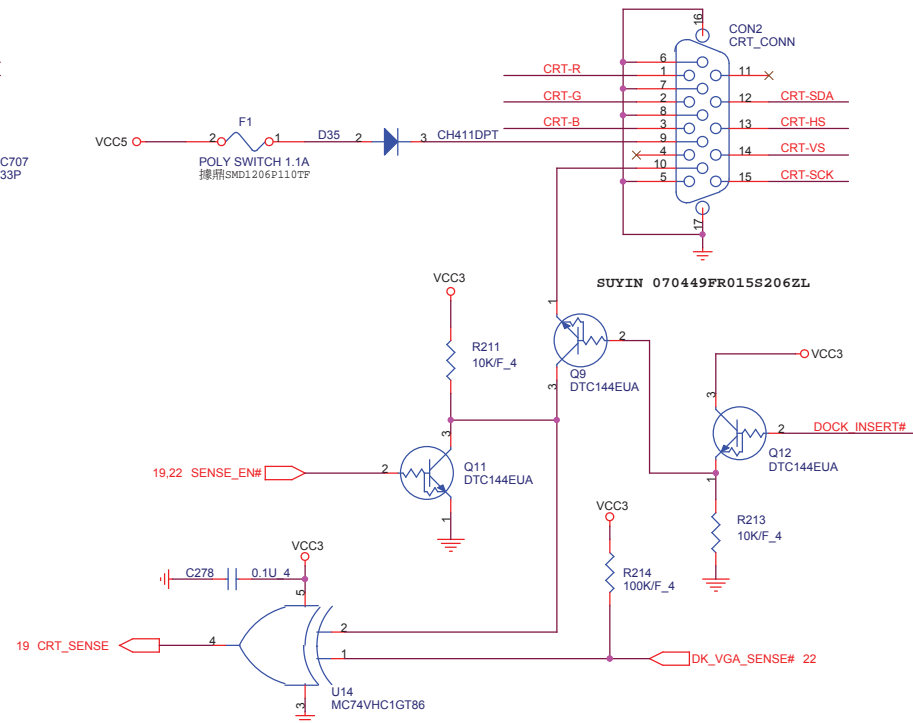


MAX4885

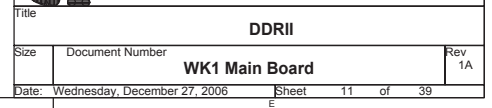
EN#	M	SEL	
L	L	L	1:2 Mode buffers Enabled H0 to H1 , V0 to V1
L	L	H	1:2 Mode buffers Enabled H0 to H2 , V0 to V2
L	H	L	2:1Mode buffers Disabled H0 to H1 , V0 to V1
L	H	H	2:1Mode buffers Disabled H0 to H1 , V0 to V1

	SENSE_EN#	MB CRT	DOCK CRT	DOCK DVI	CRT_SENSE
All no Plug	L	H	H	L	L
MB CRT Plug	L	L	H	L	H
DOCK CRT Plug	L	H	L	L	H
DOCK DVI Plug	L	H	H	H	H
SENSE EN	H	X	X	X	L
DOCK CRT/DVI Plug	L	H	L	H	L
DOCK CRT/MB CRT Plug	L	L	L	L	L

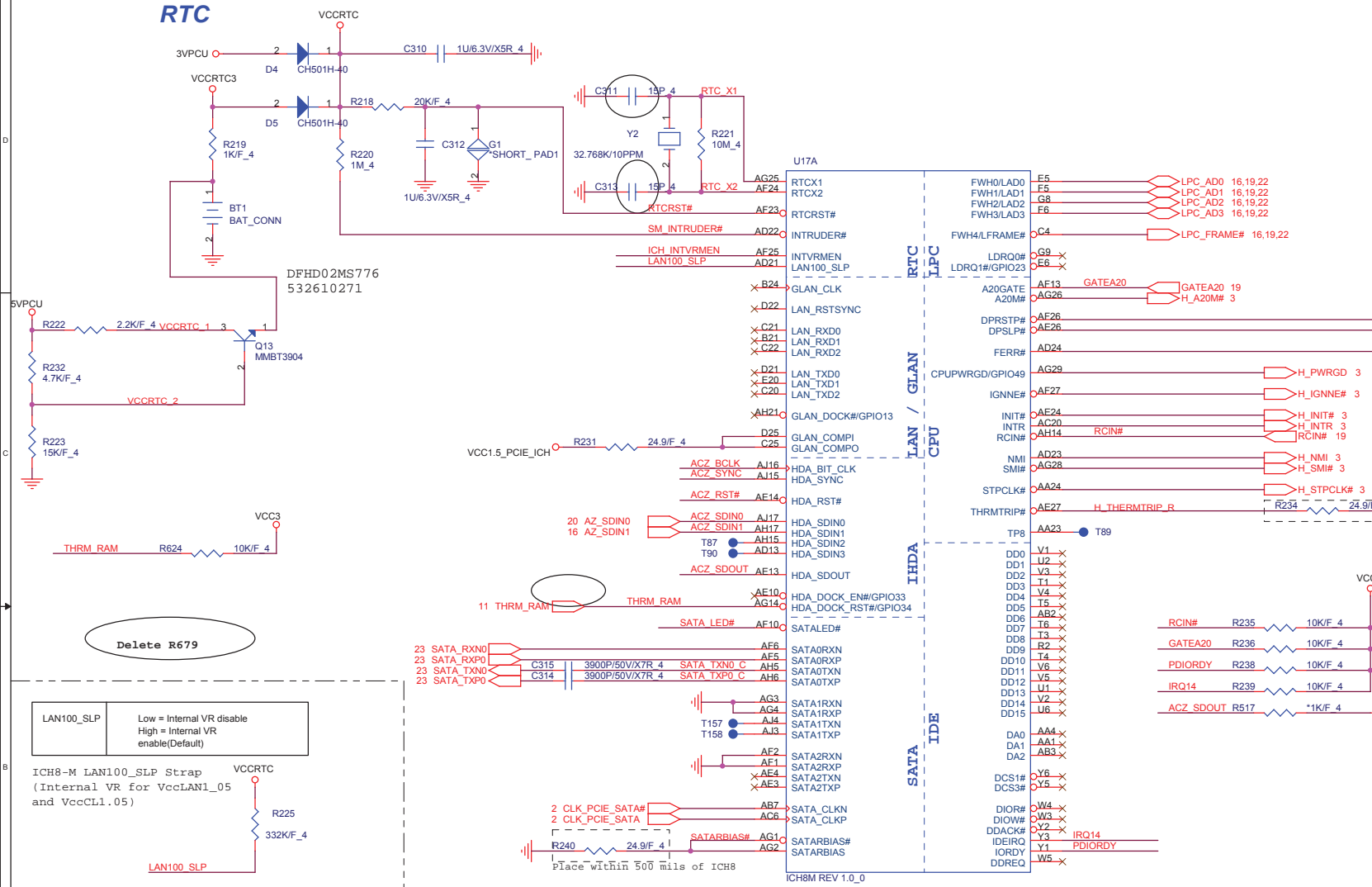
1.Level 1 Environment-related Substances Should NEVER be Used.
2.Purchase ink, paint, wire rods, and Molding resins only from the business Partners that Sony approves as Green Partners.



CRT		
Title	Document Number	Rev
	WK1 Main Board	2A
Date:	Wednesday, December 27, 2006	Sheet 10 of 39



RTC



Delete R679

LAN100_SLP	Low = Internal VR disable High = Internal VR enable(Default)
------------	---

ICH8-M LAN100_SLP Strap
(Internal VR for VccLAN1_05 and VccCL1_05)

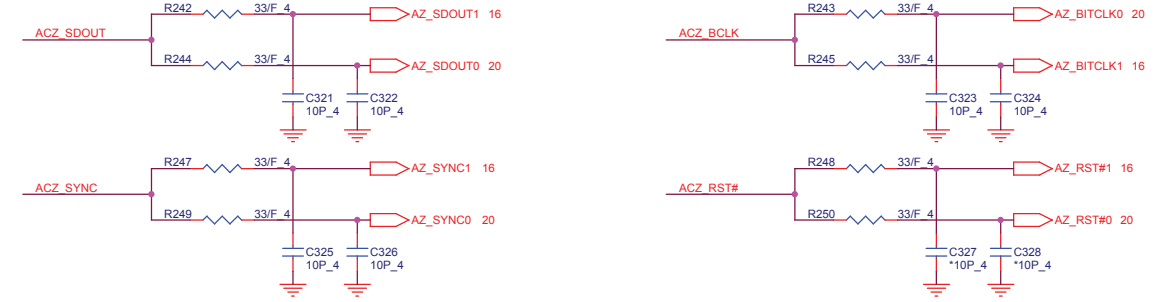
ICH8 internal VR enable strap
ICH8-M Internal VR Enable strap
(Internal VR for Vccsus1_05, Vccsus1_5 and VccCL1_5)

	INTVRMEN
Enable (default)	1
Disable	0

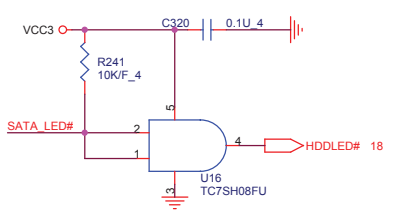
XOR Chain Entrance Strap

ICH_RSVD	HDA_SDOUT	Description
0	0	RSVD
0	1	Enter XOR Chain
1	0	Normal operation(Default)
1	1	Set PCIe port config bit 1

HD Audio to Codec and Modem



SATA LED



QUANTA COMPUTER

Title: ICH8-M HOST1 of 4

Size: Document Number: WK1 Main Board Rev 2A

Date: Wednesday, December 27, 2006 Sheet 12 of 39

1.Level 1 Environment-related Substances Should NEVER be Used.
2.Purchase ink, paint, wire rods, and Molding resins only from the business Partners that Sony approves as Green Partners.

Docking Giga LAN

Giga LAN

WLAN

JMB362

NEW card

Delete Intel Robson

U17D

PCI-Express
Direct Media Interface

SPI

USB

ICH8M REV 1.0

U17B

PCI

Interrupt I/F

ICH8M REV 1.0

U17D

PCI-Express
Direct Media Interface

SPI

USB

ICH8M REV 1.0

U17B

PCI

Interrupt I/F

ICH8M REV 1.0

VCC1.5_PCIE_ICH

USB_PORT

USB_PORT

Docking Hub(USB_PORT)

Docking BAY

Finger Print

Docking SIO/PIO

USB_PORT

BAY

EXPRESS CARD

USB_HUB

USB_PORT

USB_PORT

USB_PORT

USB_PORT

USB_PORT

USB_PORT

USB_PORT

USB_PORT

USB_PORT

USB_PORT

USB_PORT

USB_PORT

USB_PORT

USB_PORT

USB_PORT

USB_PORT

USB_PORT

USB_PORT

USB_PORT

USB_PORT

USB_PORT

USB_PORT

USB_PORT

USB_PORT

USB_PORT

USB_PORT

USB_PORT

USB_PORT

PCI GNT0# R482 1K/F 4

PCI REQ#2 6 5 PCI DEVSEL# VCC3

PCI REQ#1 7 4

PCI FRAME# 8 3

VCC3 9 2

VCC3 10 1

PCI INTB# 6 5

PCI REQ#0 7 4

PCI INT# 8 3

PCI INT# 9 2

VCC3 10 1

PCI TRDY# 6 5

PCI IRDY# 7 4

PCI INT# 8 3

VCC3 9 2

VCC3 10 1

USBOC2# 6 5

USBOC4# 7 4

USBOC3# 8 3

USBOC1# 9 2

3VSUS 10 1

USBOC8# R258 8.2K 4

USBOC6# R259 8.2K 4

A16 SWAP Override strap

PCI_GNT#3	Low = A16 swap override enabled High = Default
-----------	---

ICH8 Boot BIOS select

PCI_GNT#0	SPI_CS#1	Boot BIOS Location
0	1	SPI
1	0	PCI
1	1	LPC(Default)

PCI bus info.

PCI DEVICE	IDSEL#	REQ# / GNT#	Interrupts
Ti8402	AD25	REQ0# / GNT0#	PIRQ E/F/G

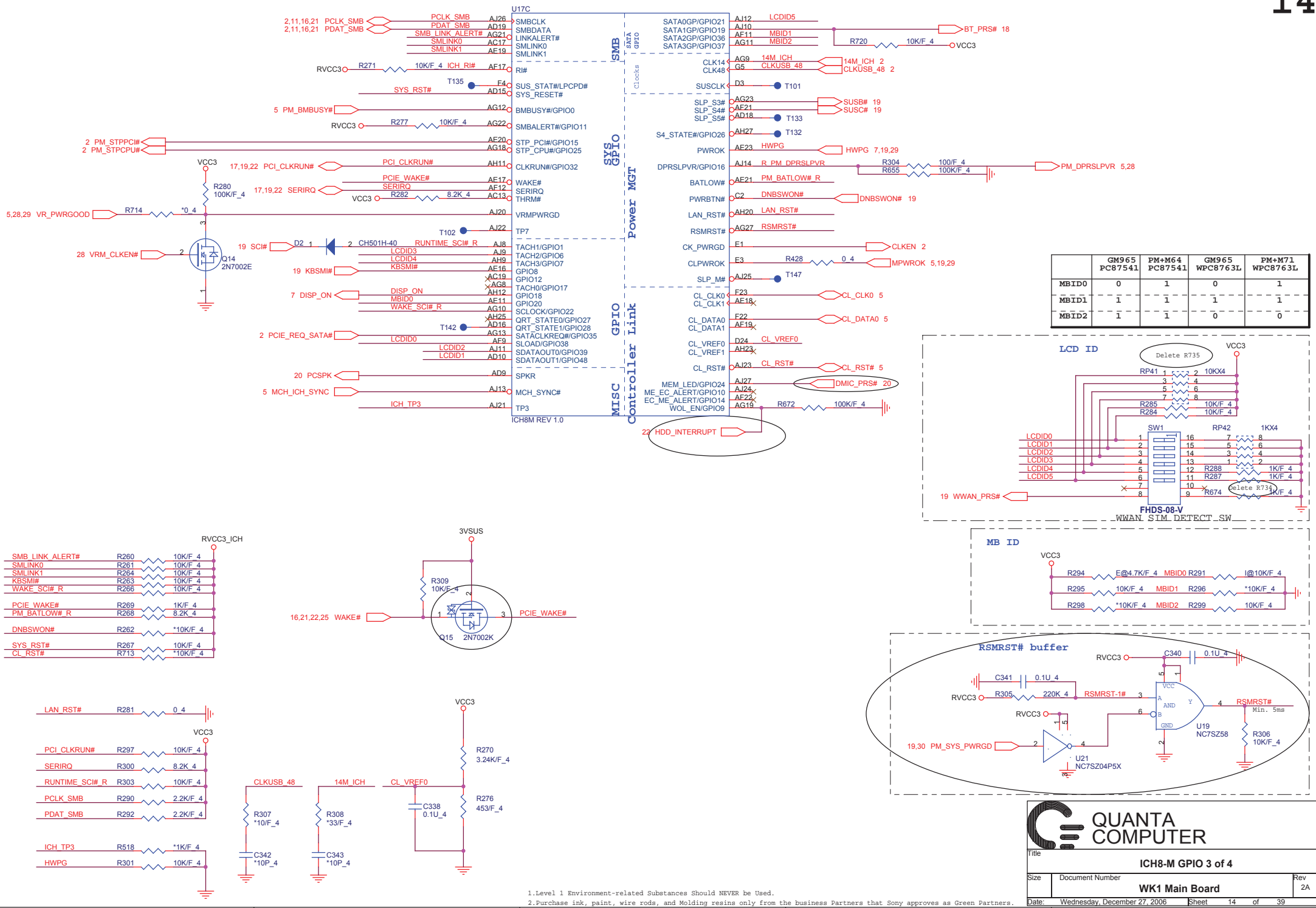
IRQ	Description
PIRQA	USB UHCI Controller #1, USB UHCI Controller #4
PIRQB	Audio; Modem; SMBus
PIRQC	USB UHCI Controller #3, SATA/IDE Native Mode
PIRQD	USB UHCI Controller #2
PIRQE	INT LAN; option for SCI, TC0, HPET #0, 1, 2; Ti8412
PIRQF	option for SCI, TC0, HPET #0, 1, 2; Ti8412
PIRQG	option for SCI, TC0, HPET #0, 1, 2; Ti8412
PIRQH	USB EHCI Controller; option for SCI, TC0, HPET #0, 1, 2

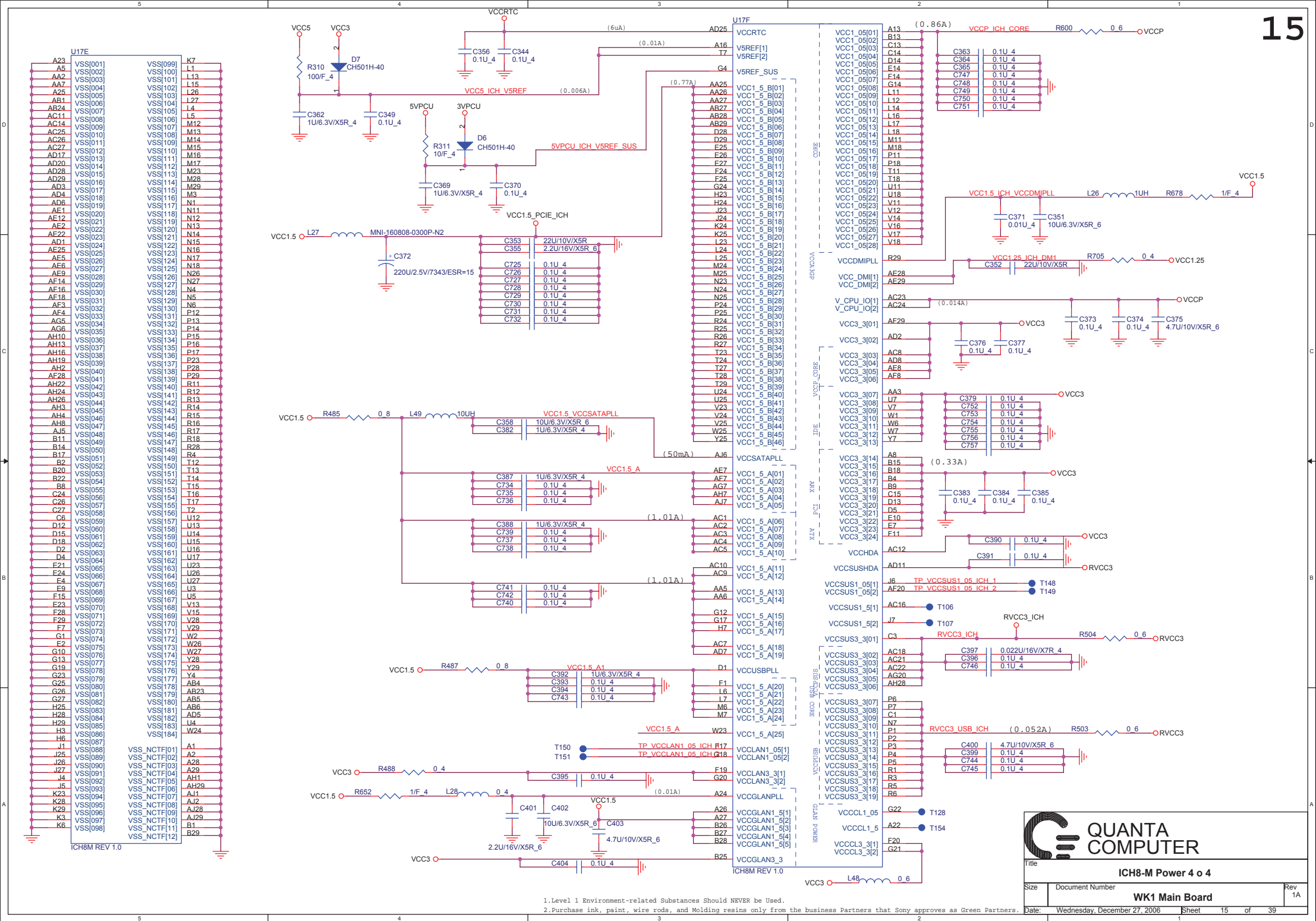
QUANTA
COMPUTER

Title ICH8-M PCIE 2 of 4			
Size	Document Number	Rev 2A	
WK1 Main Board			
Date	Wednesday, December 27, 2006	Sheet	13 of 39

1. This part should not contain any substances which are specified in SS-00259-1

2. Purchase ink, paint, wire rods and molding resins only from the business partners that Sony approves as Green Partners.

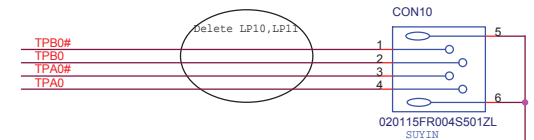
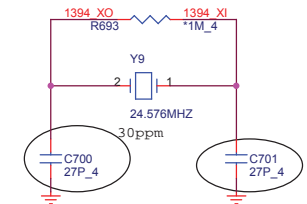
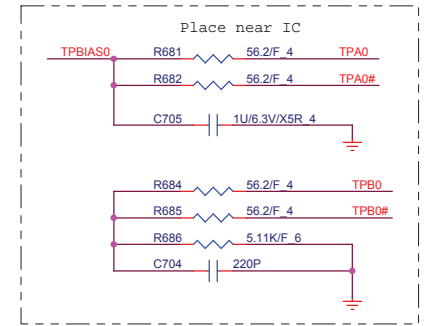
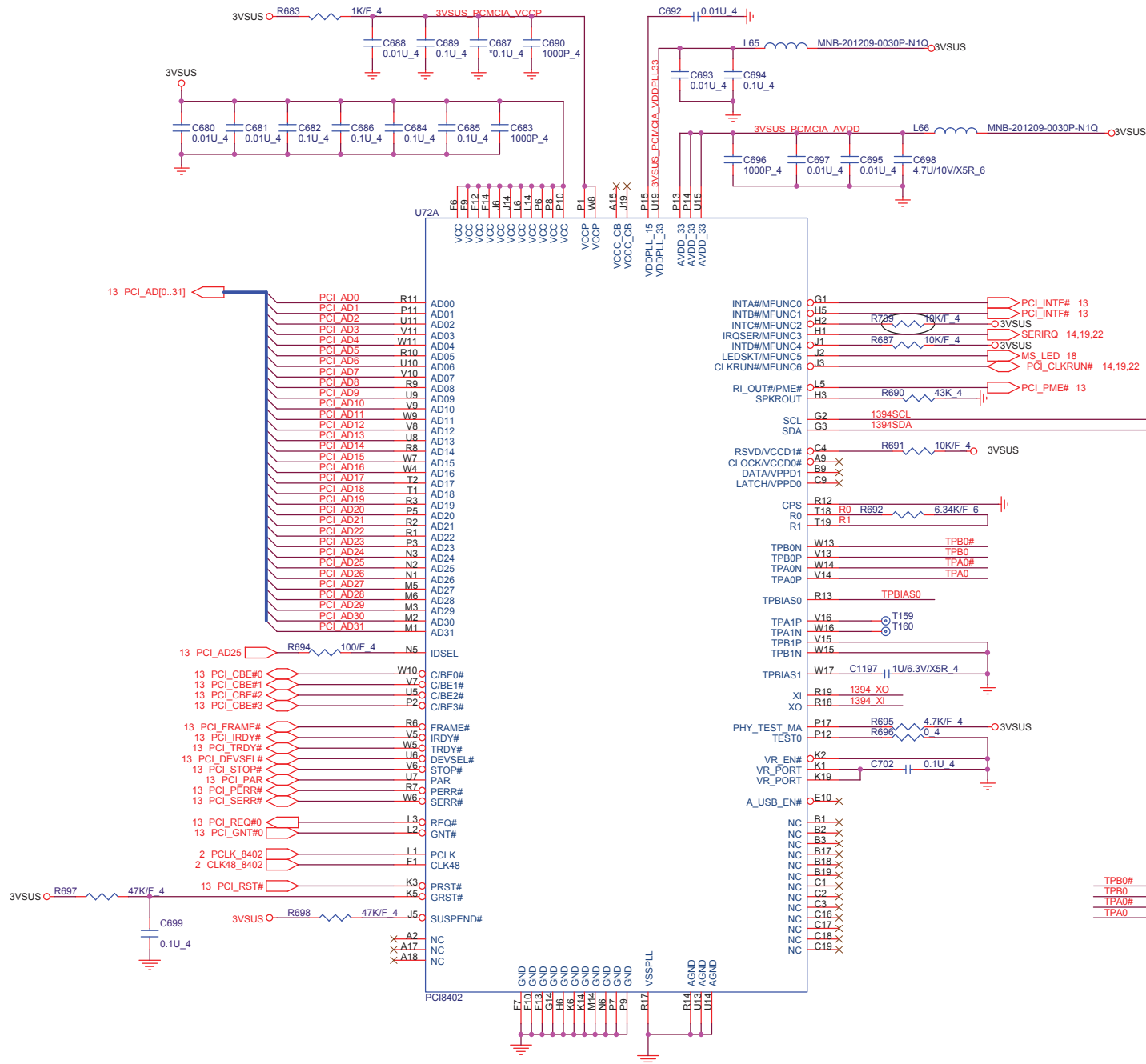




MDC V1.5

[illegible]**MINIPCIE / MDC**

Size	Document Number	Rev
	WK1 Main Board	2A



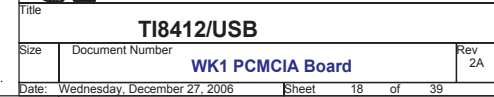
Title: **TI8402/1394**

Size: Document Number: **WK1 PCMCIA Board**

Date: Wednesday, December 27, 2006 Sheet 17 of 39

1. This part should not contain any substances which are specified in SS-00259-1

2. Purchase ink, paint, wire rods and molding resins only from the business partners that Sony approves as Green Partners.

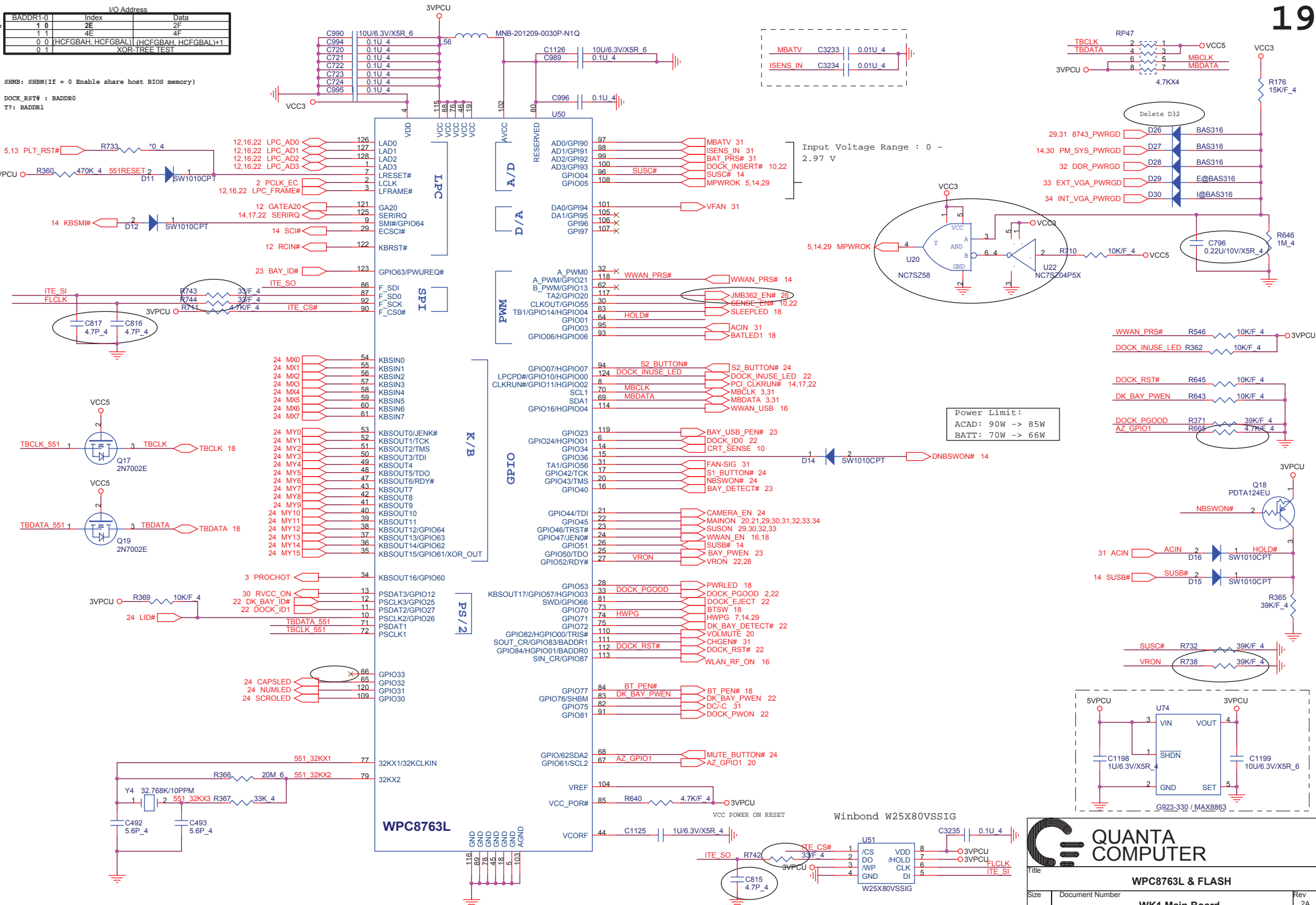


2. Purchase ink, paint, wire rods and molding resins only from the business partners that Sony approves as Green Partners

I/O Address		
BADDR1-0	Index	Data
1 0	2E	2F
1 1	4E	4F
0 0	(HCFGBAH, HCFGBAL) (HCFGBAH, HCFGBAL)+1	
0 1	XOR-TREE TEST	

SHMB: SHBM(If = 0 Enable share host BIOS memory)

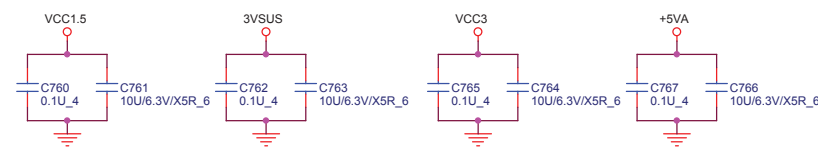
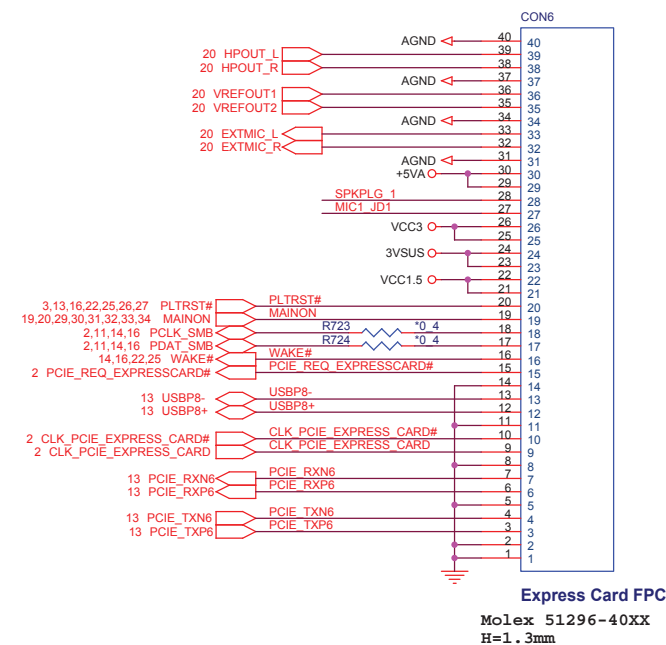
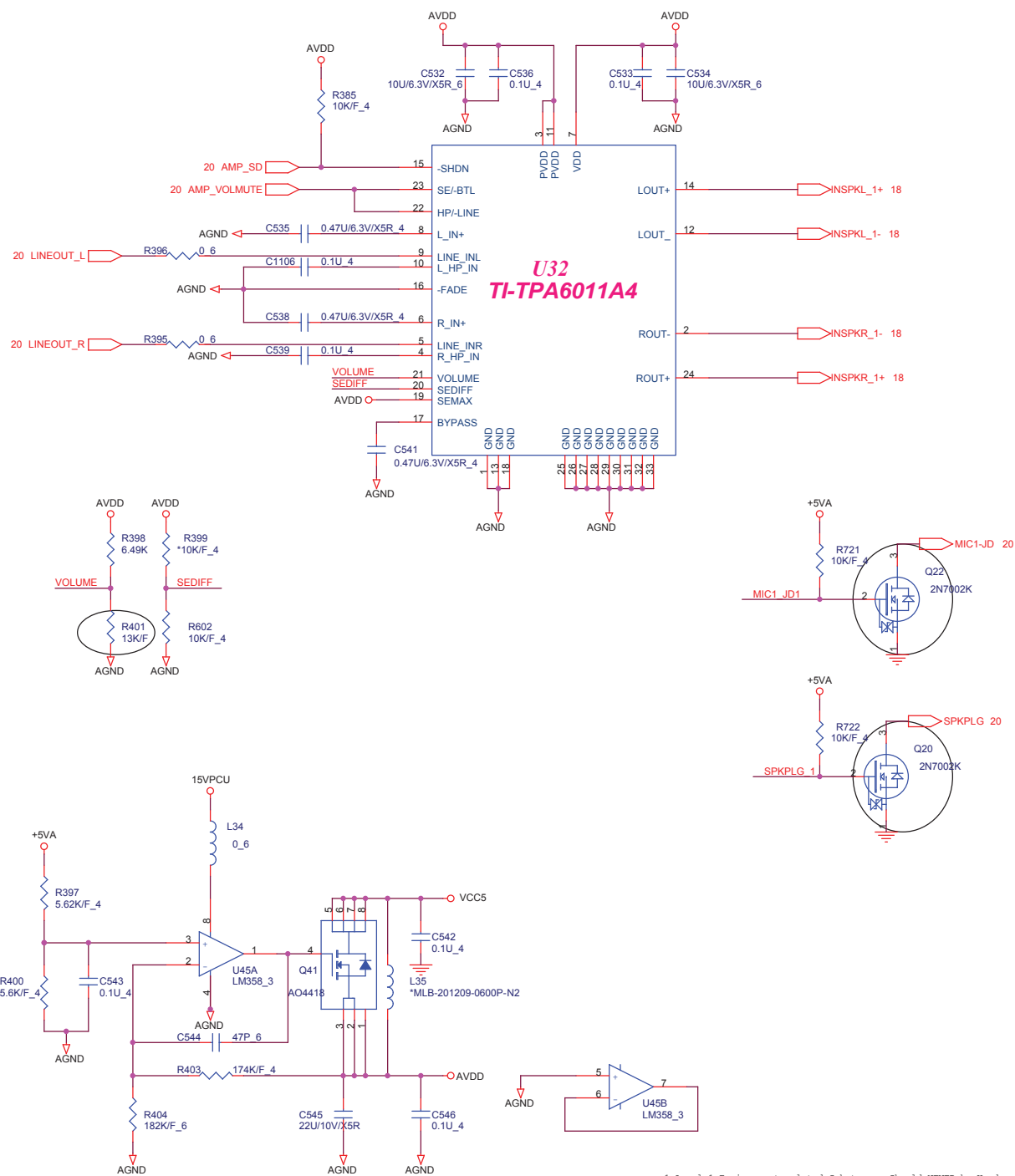
```
DOCK_RST# : BADDR0
T?: BADDR1
```



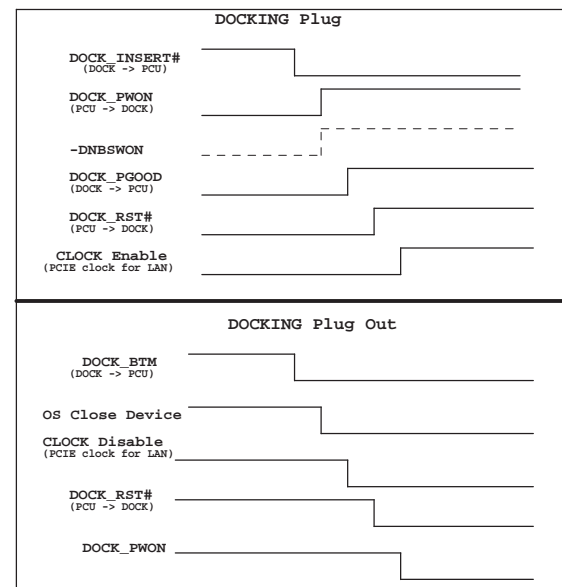
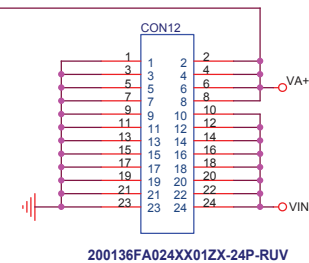
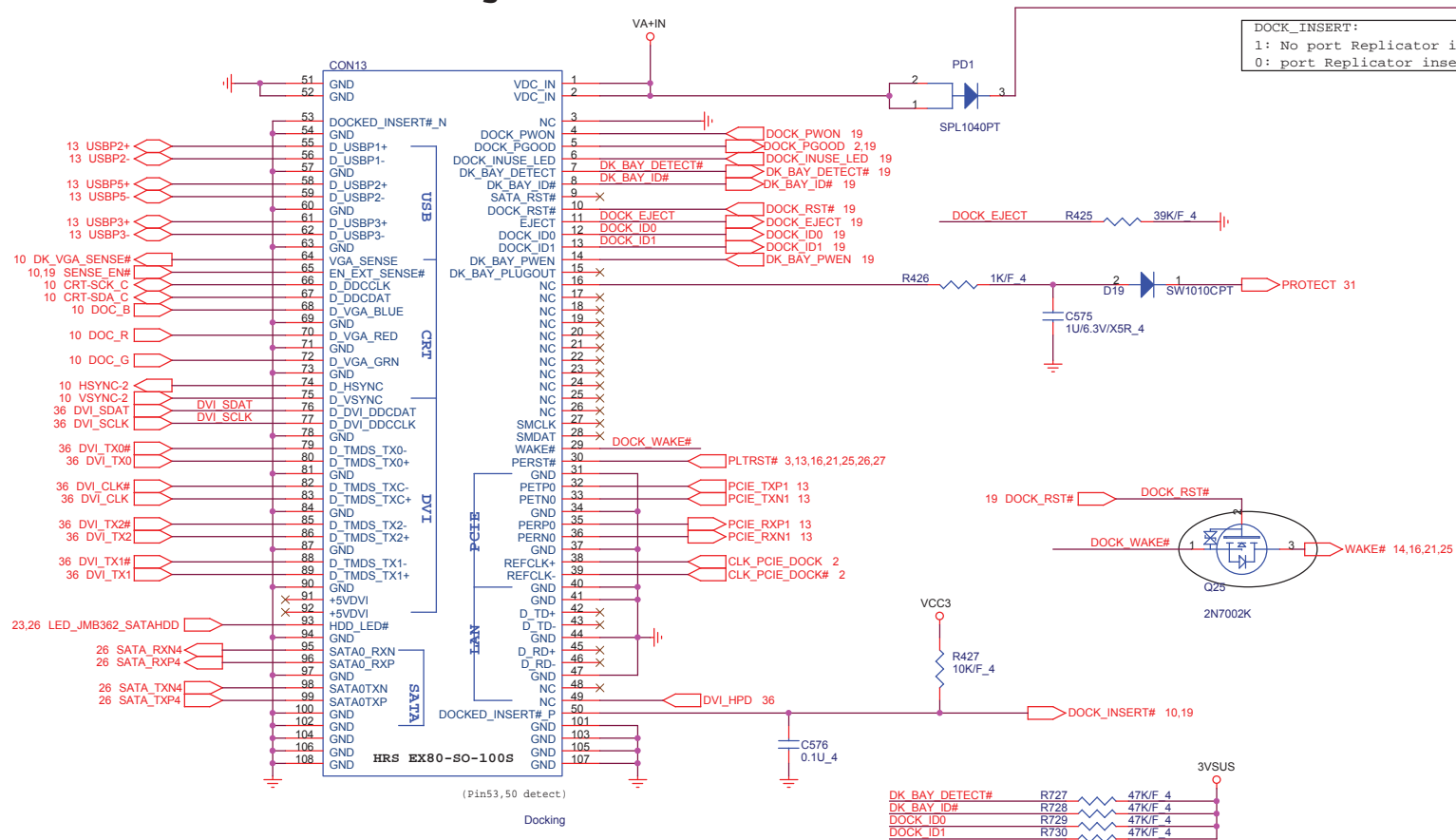
1. Level 1 Environment-related Substances Should NEVER be Used.
2. Purchase ink, paint, wire rods, and Molding resins only from
4. the business Partners that Sony approves as Green Partners.



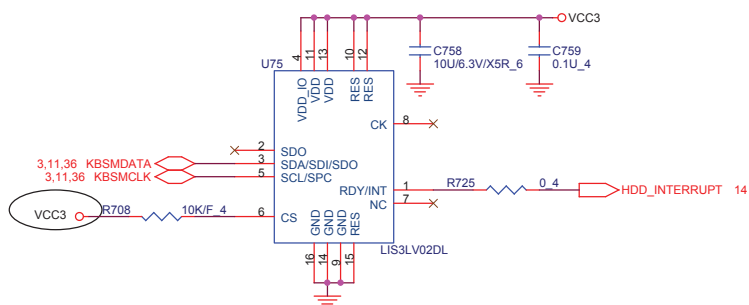
Audio amplifier



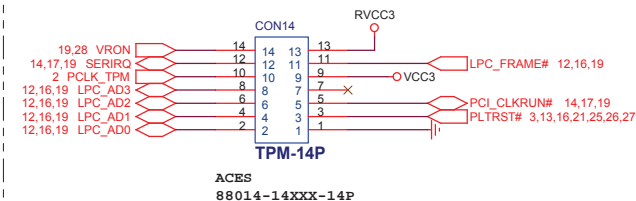
Docking



HDD PROTECT



TPM

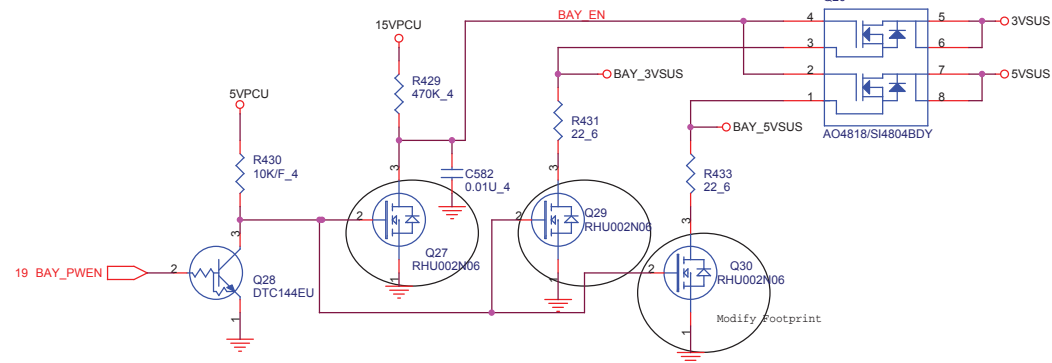
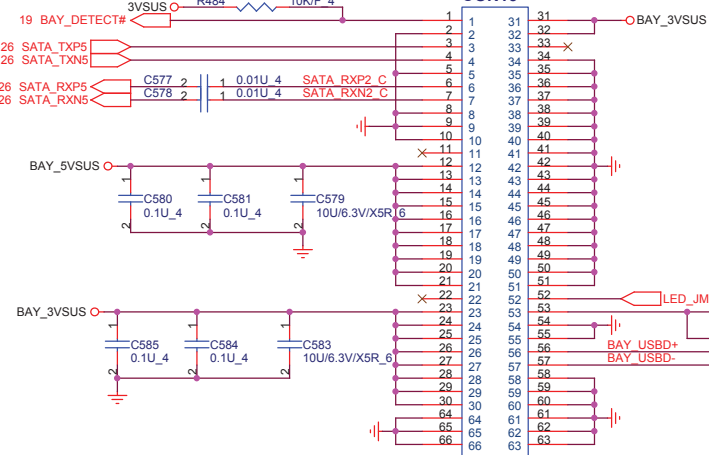


1. Level 1 Environment-related Substances Should NEVER be Used.
2. Purchase ink, paint, wire rods, and Molding resins only from the business Partners that Sony approves as Green Partners.

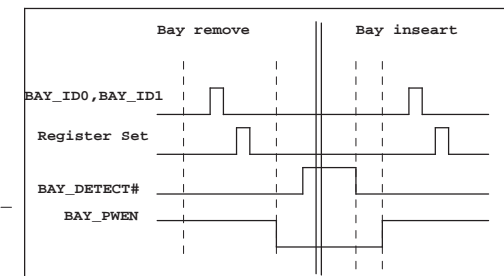


Title			
Docking/TPM			
Size	Document Number	Rev	
	WK1 Main Board	2A	
Date:	Wednesday, December 27, 2006	Sheet	22 of 39

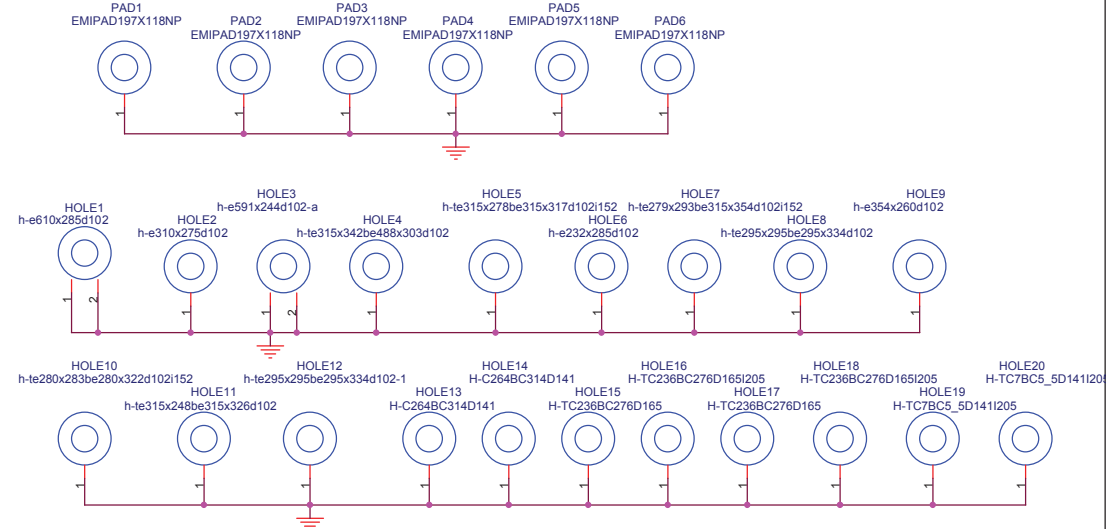
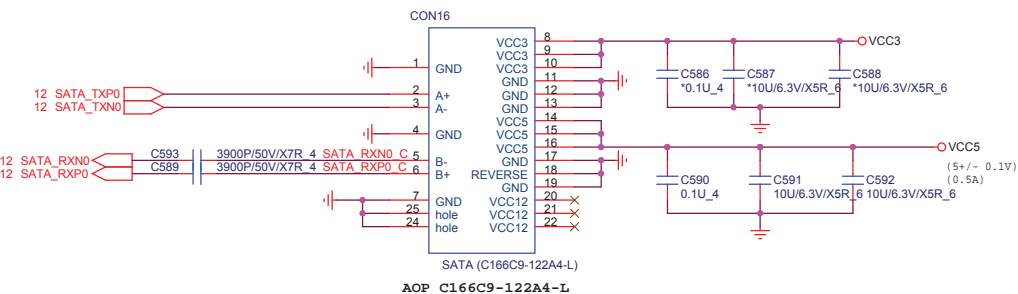
BAY to ODD/HDD

BAY_CONNECTOR(500152FB060SX002X)
CON15

BAY_ID#		BAY_USB_PEN#
0	SATA Device	HI
1	USB Device	LO



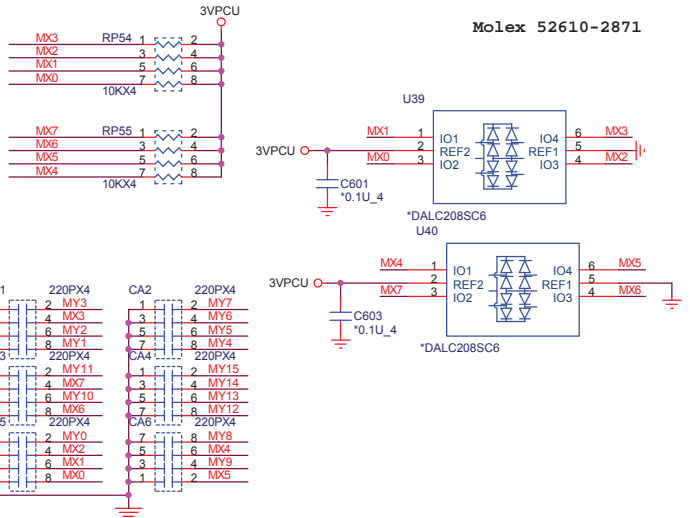
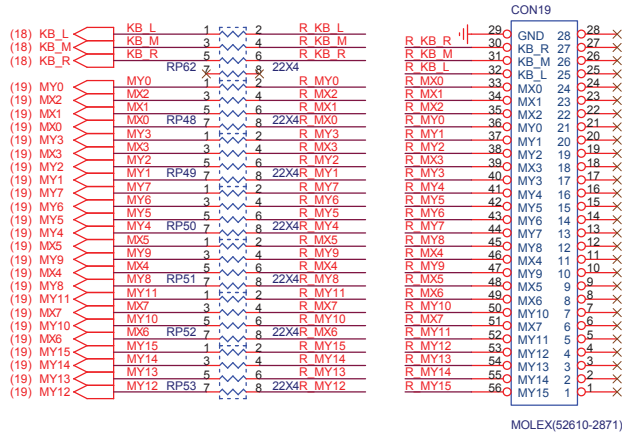
HDD CONNECTOR-1



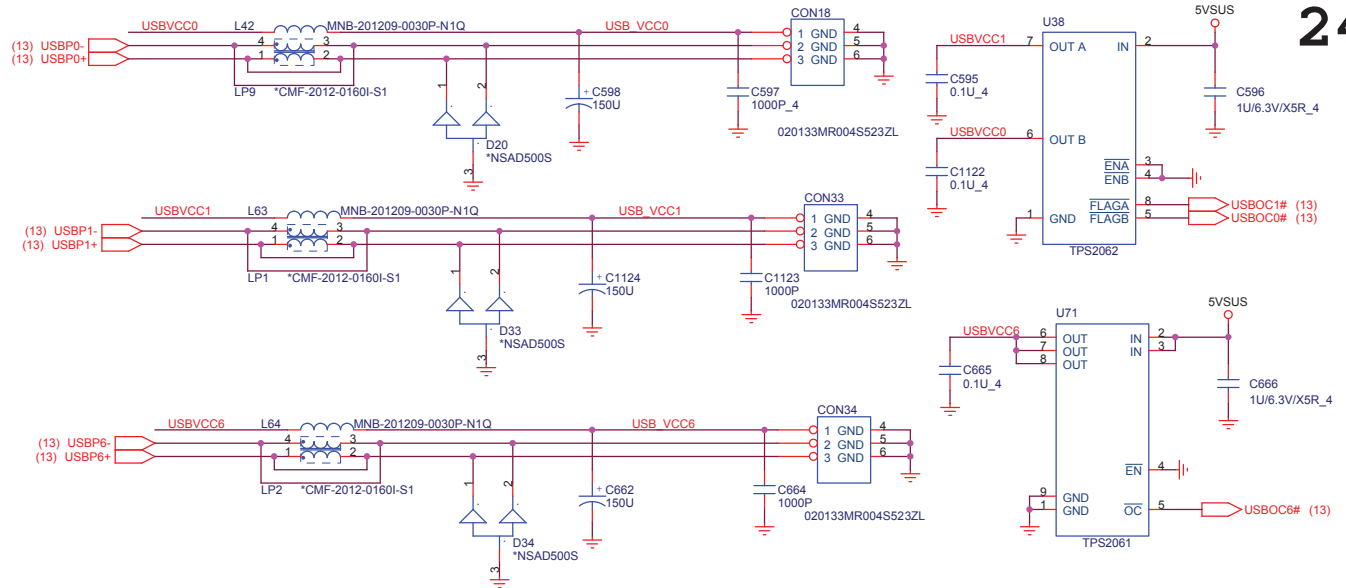
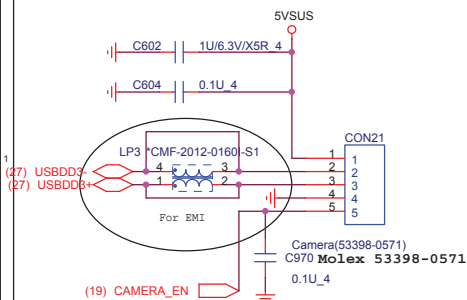
Title			HDD/BAY		
Size			Document Number		
Date: Wednesday, December 27, 2006			Sheet 23 of 39		
Rev 2A			WK1 Main Board		

1.Level 1 Environment-related Substances Should NEVER be Used.
2.Purchase ink, paint, wire rods, and Molding resins only from the business Partners that Sony approves as Green Partners.

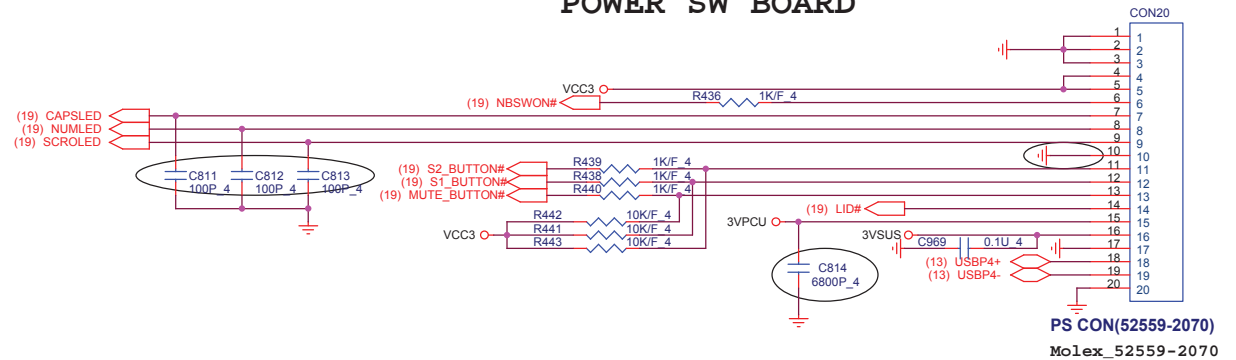
KEYBOARD

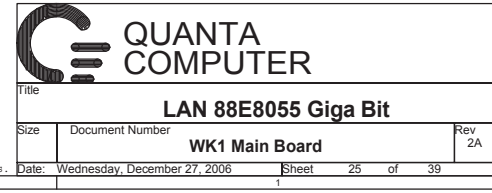


USB Camera



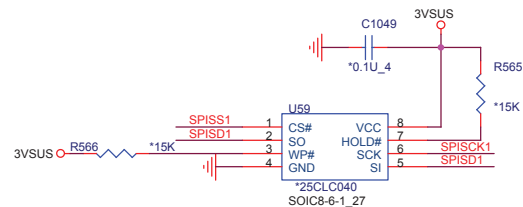
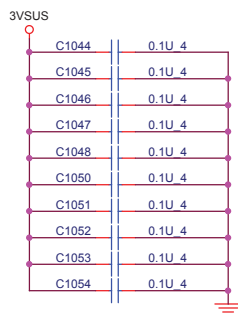
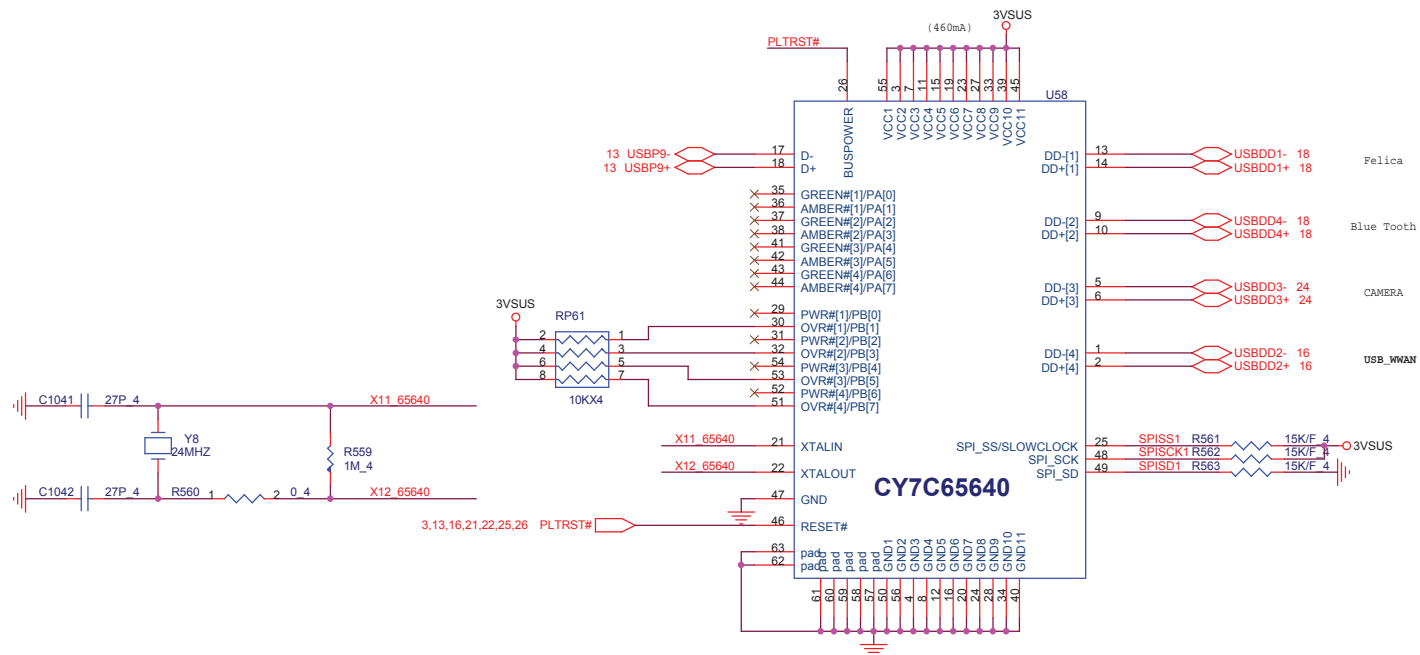
POWER SW BOARD





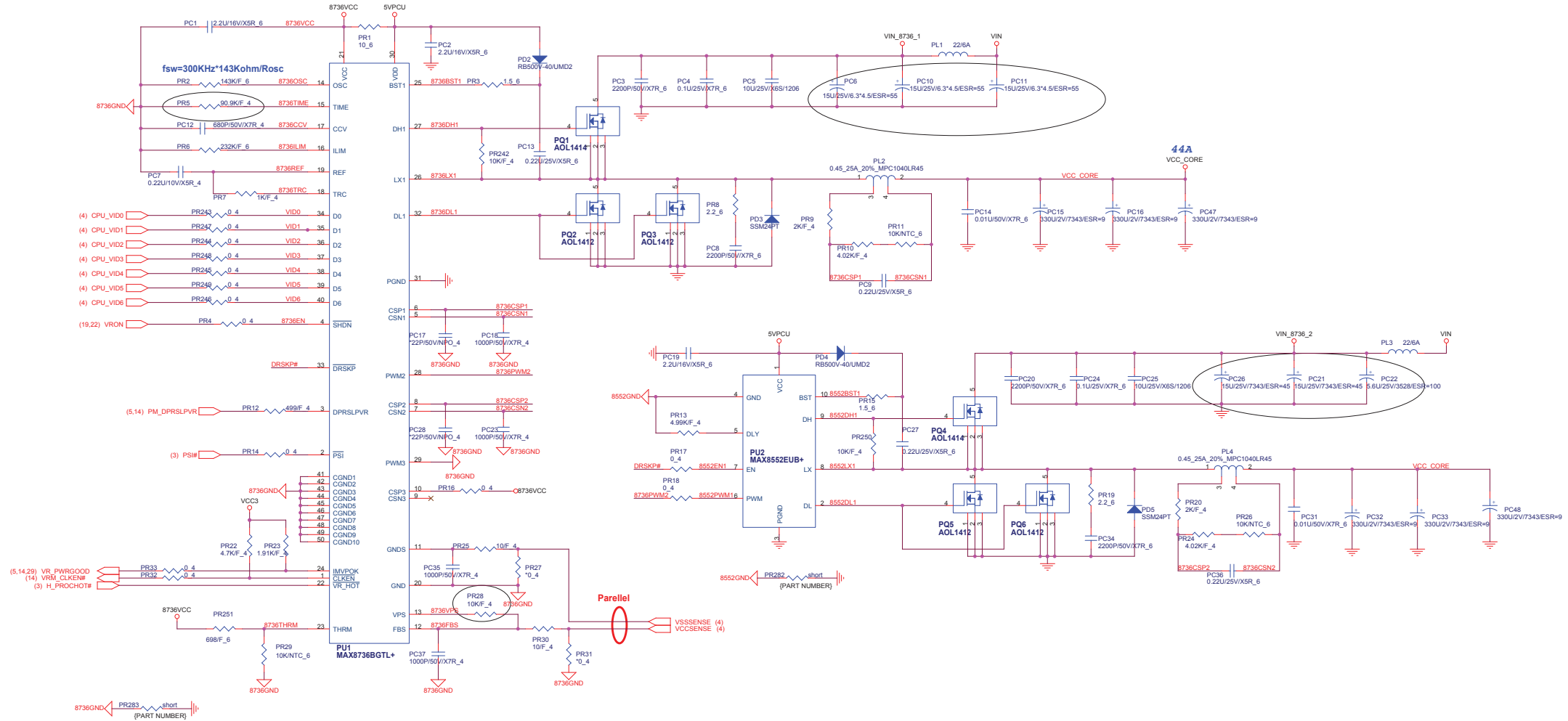
1.Level 1 Environment-related Substances Should NEVER be Used.

2.Purchase ink, paint, wire rods, and Molding resins only from the business Partners that Sony approves as Green Partners.



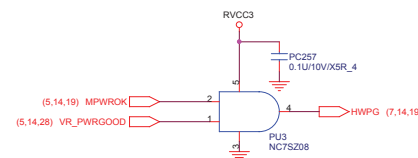
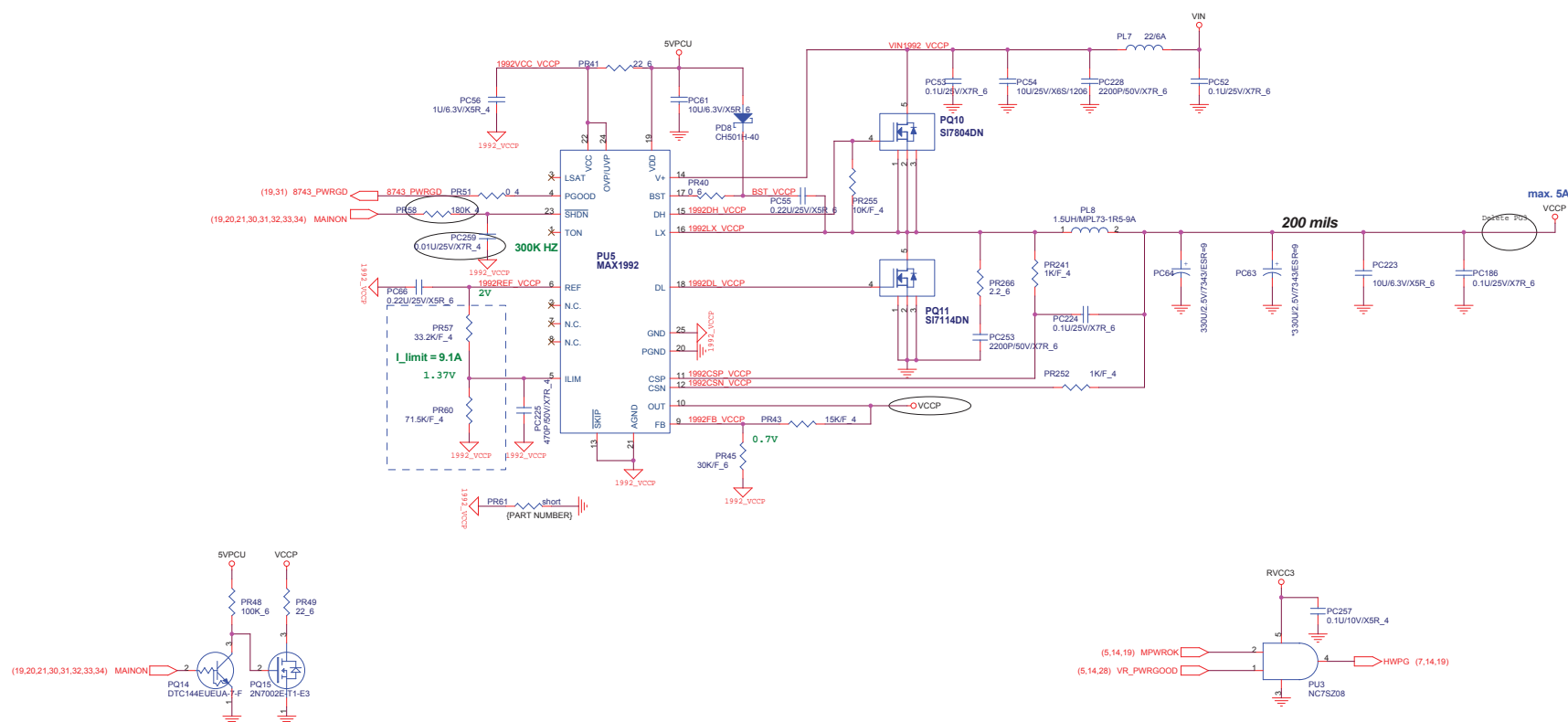
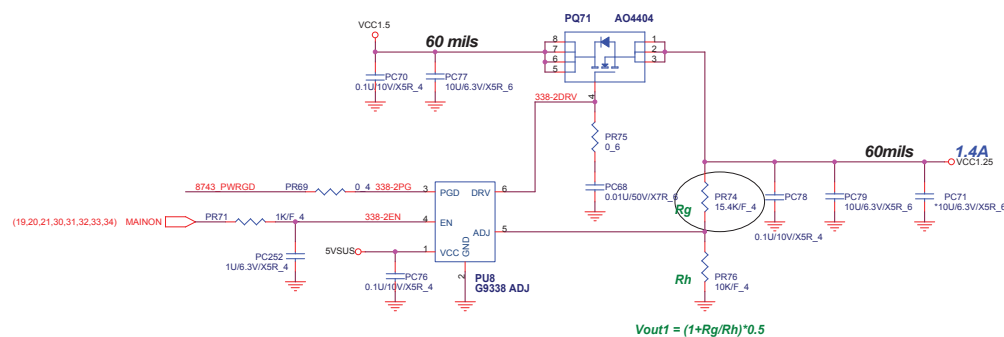
CPU CORE

dV_Target/dt=12.5mV/us*71.5kohm/R_TIME
R_ILIM(PK)=8V*R_TRC/(PK)LIMIT*Rsense



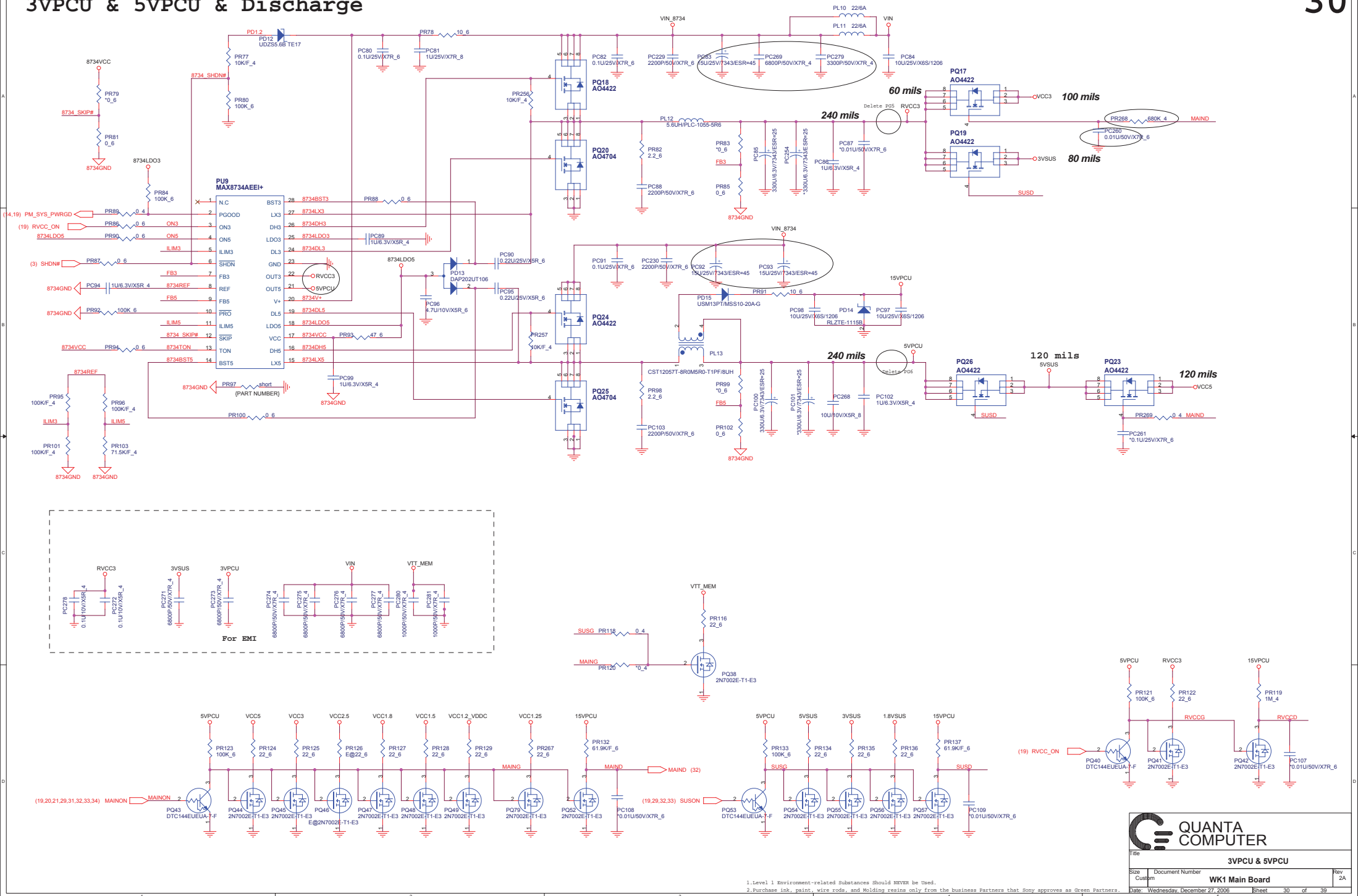
QUANTA COMPUTER		
CPU CORE (MAX8736)		
Title	Document Number	Rev
	WK1 Main Board	1A
Size	Customer	
1.Level 1 Environment-related Substances Should NEVER be Used.		
2.Purchase ink, paint, wire rods, and Molding resins only from the business Partners that Sony approves as Green Partners.		
Date	Wednesday, December 27, 2006	Sheet 28 of 39

VCC1.25



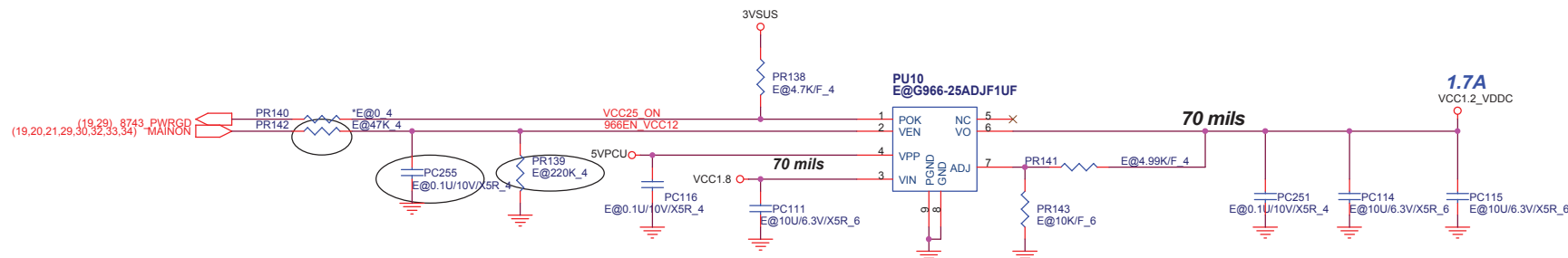
3VPCU & 5VPCU & Discharge

30

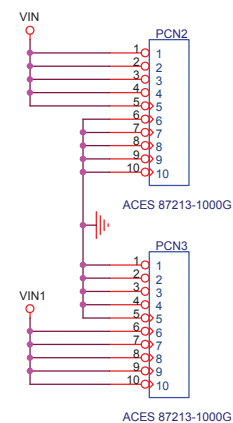
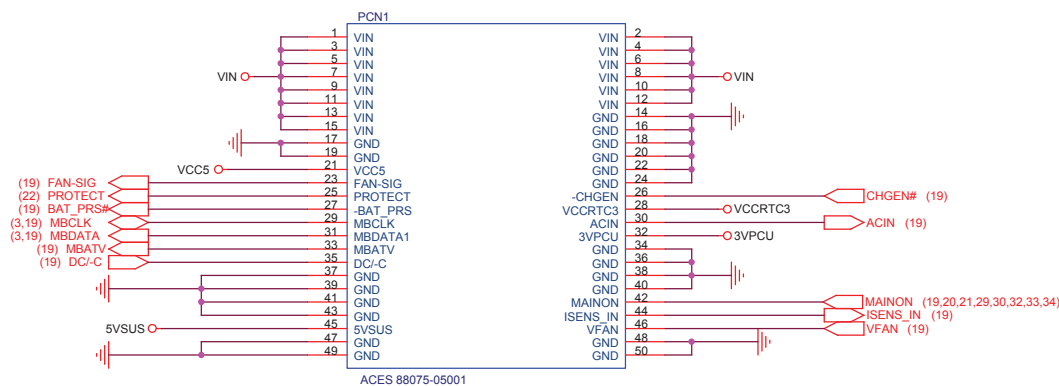
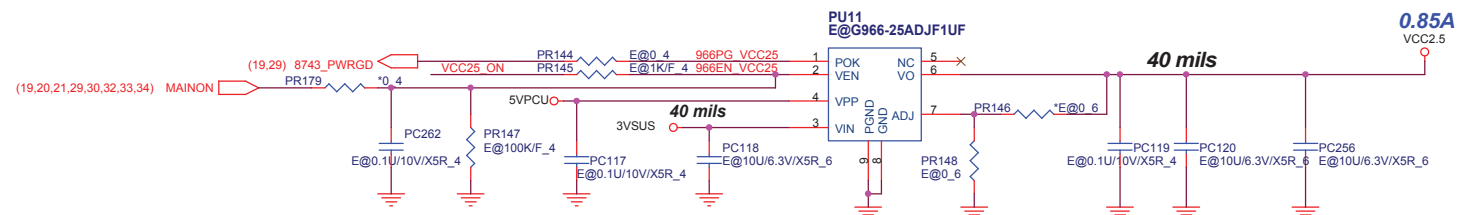


1. Level 1 Environment-related Substances should NEVER be used.
2. Purchase ink, paint, wire rods, and Molding resins only from the business Partners that Sony approves as Green Partners.

VCC1.2_VDDC

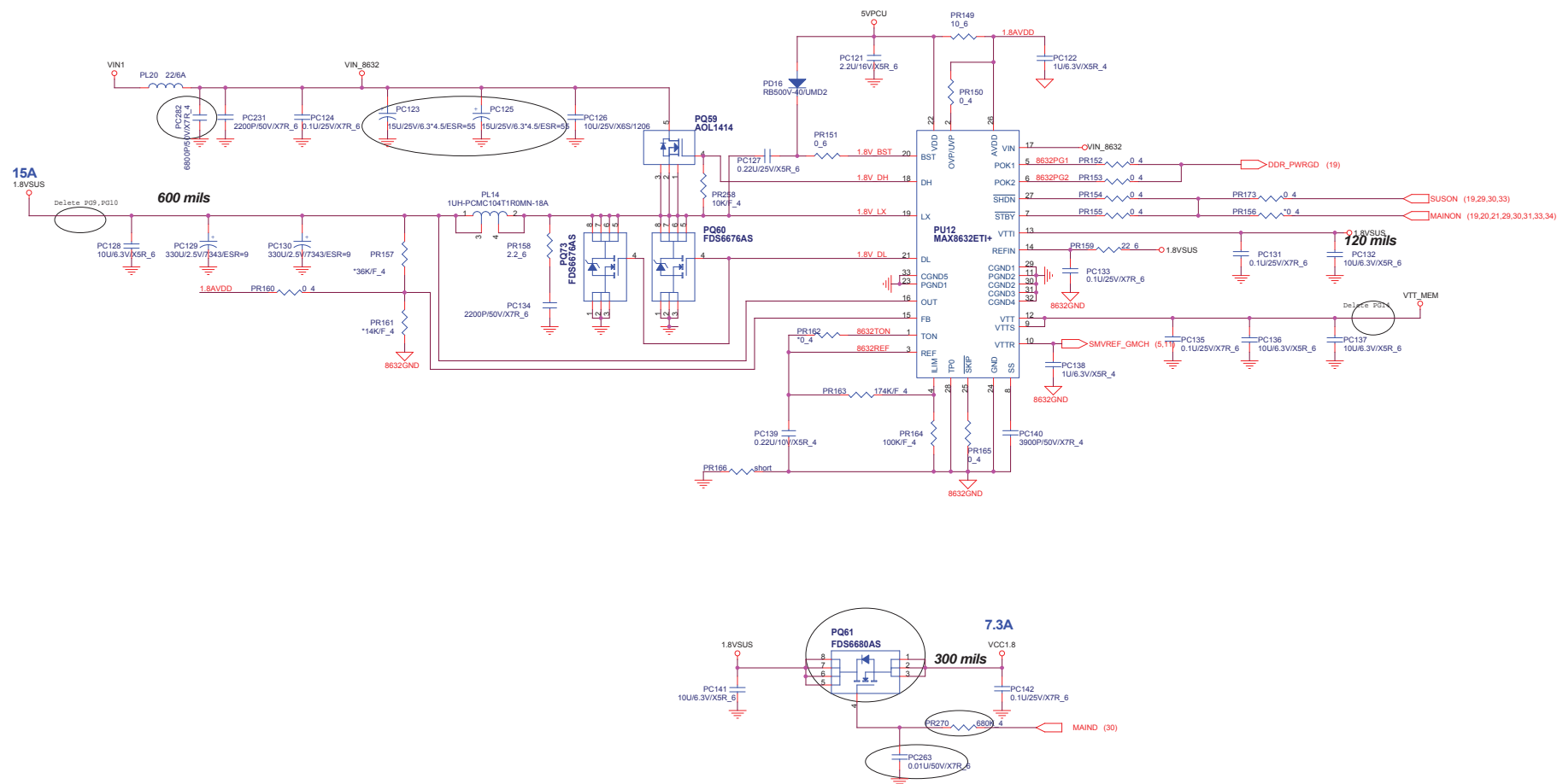


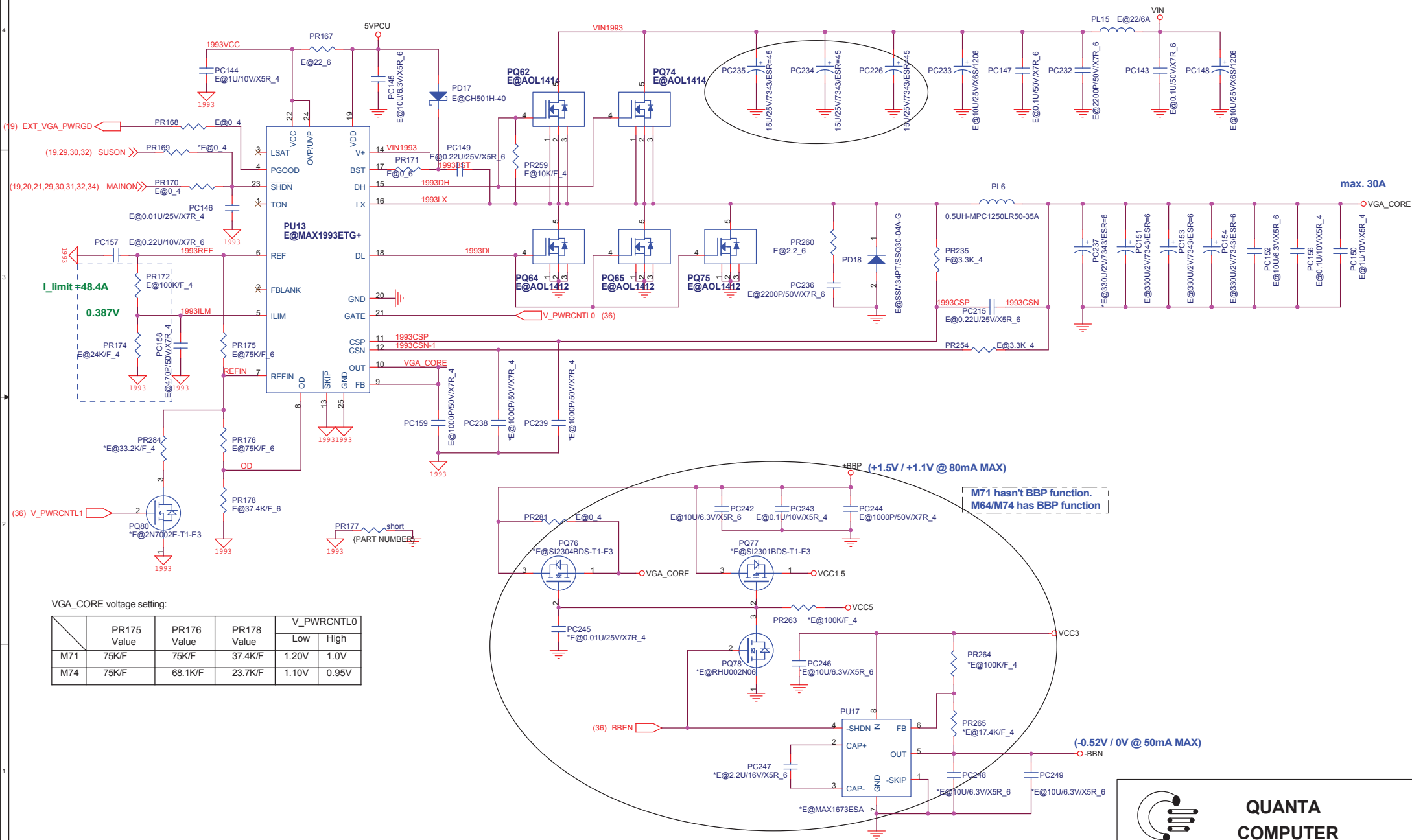
VCC2.5

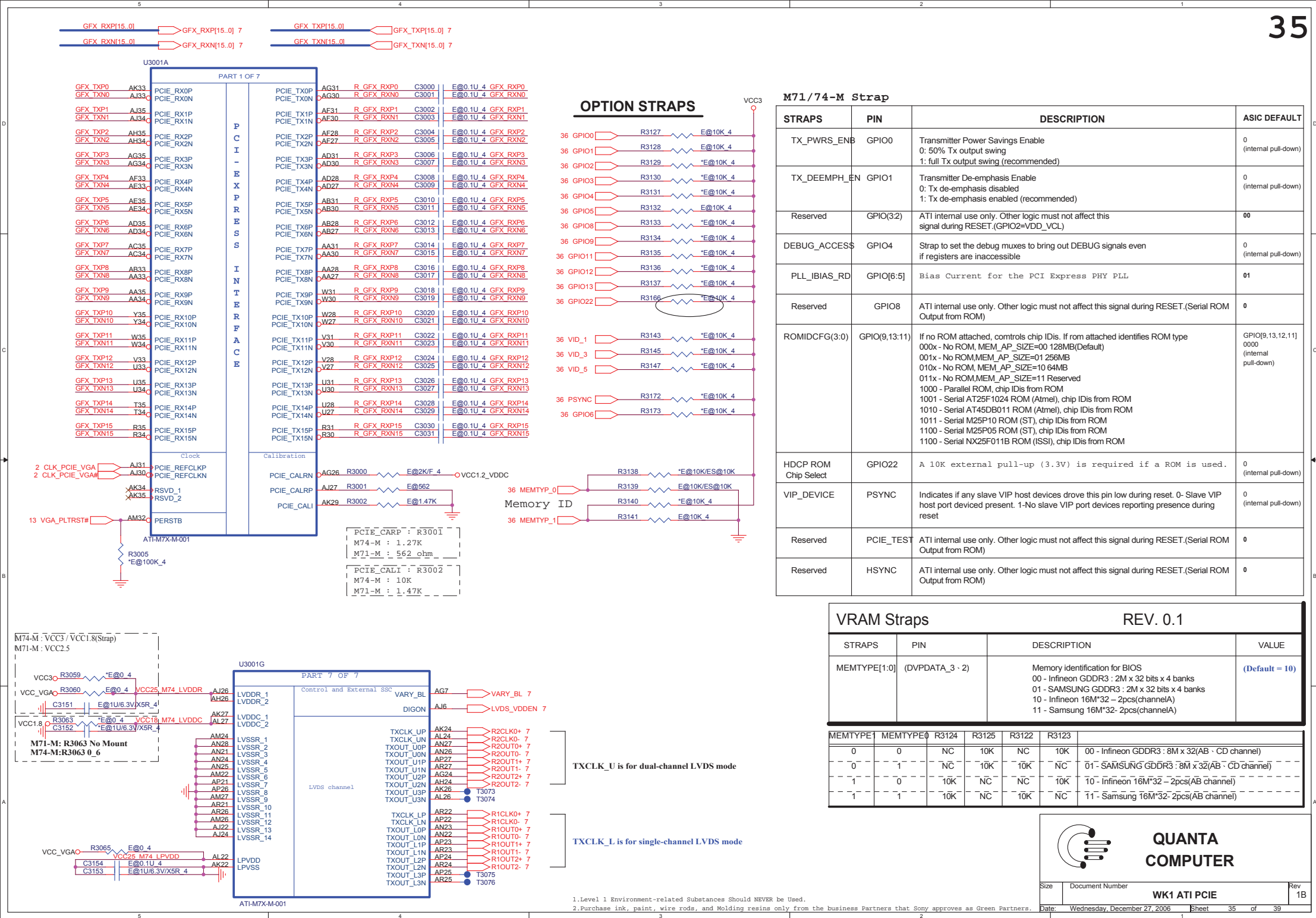


**QUANTA
COMPUTER**

1.8VSUS & VTT_MEM



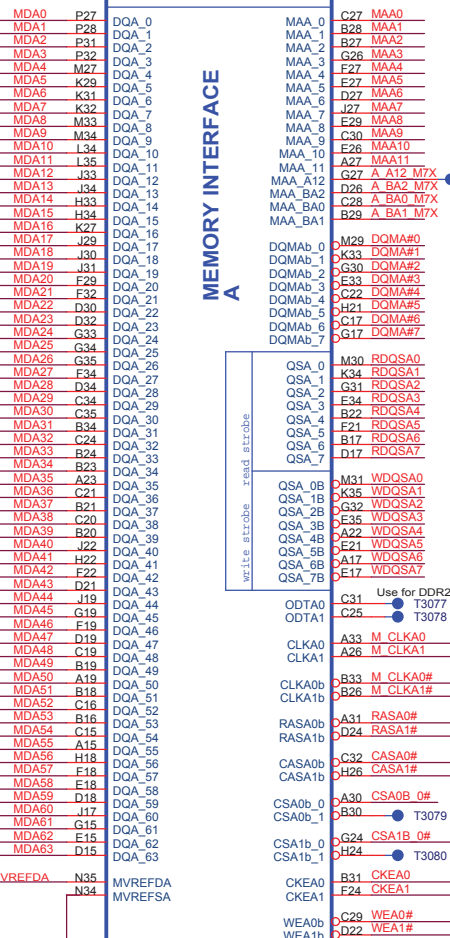




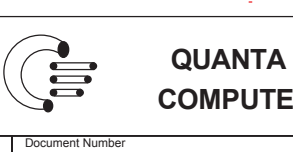
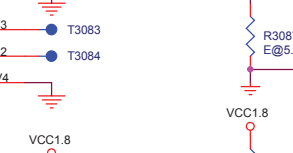
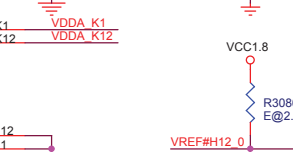
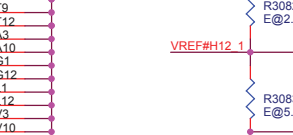
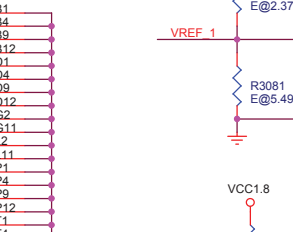
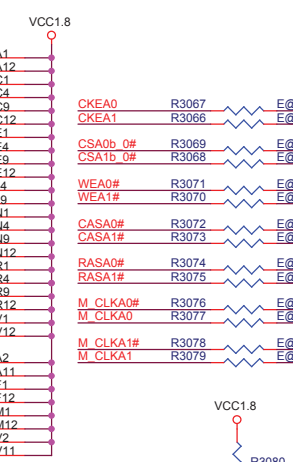
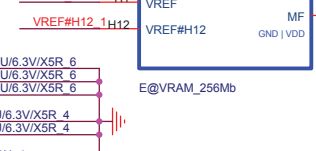
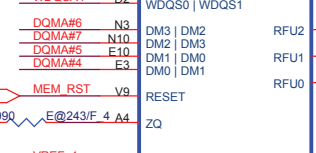
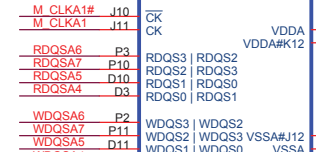
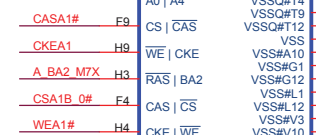
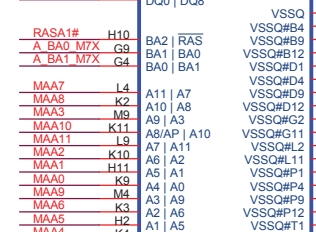
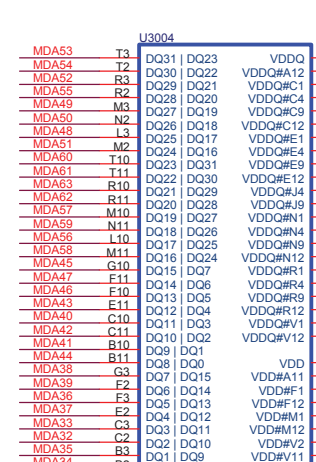
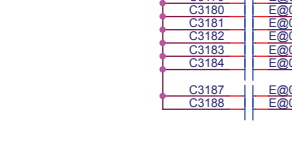
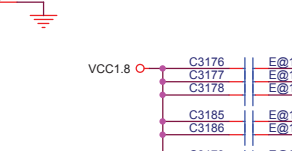
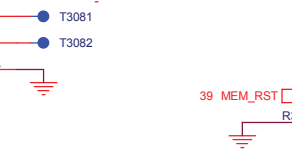
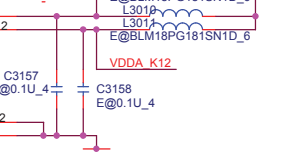
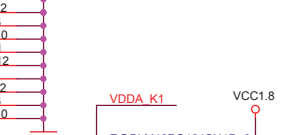
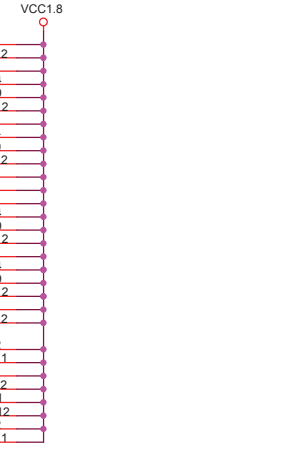
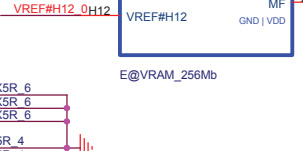
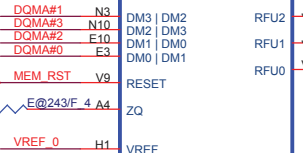
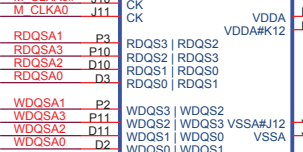
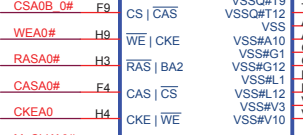
Channel A

Part 3 of 7

MEMORY INTERFACE



T3094 For 8 Banks MAA_13=BA2

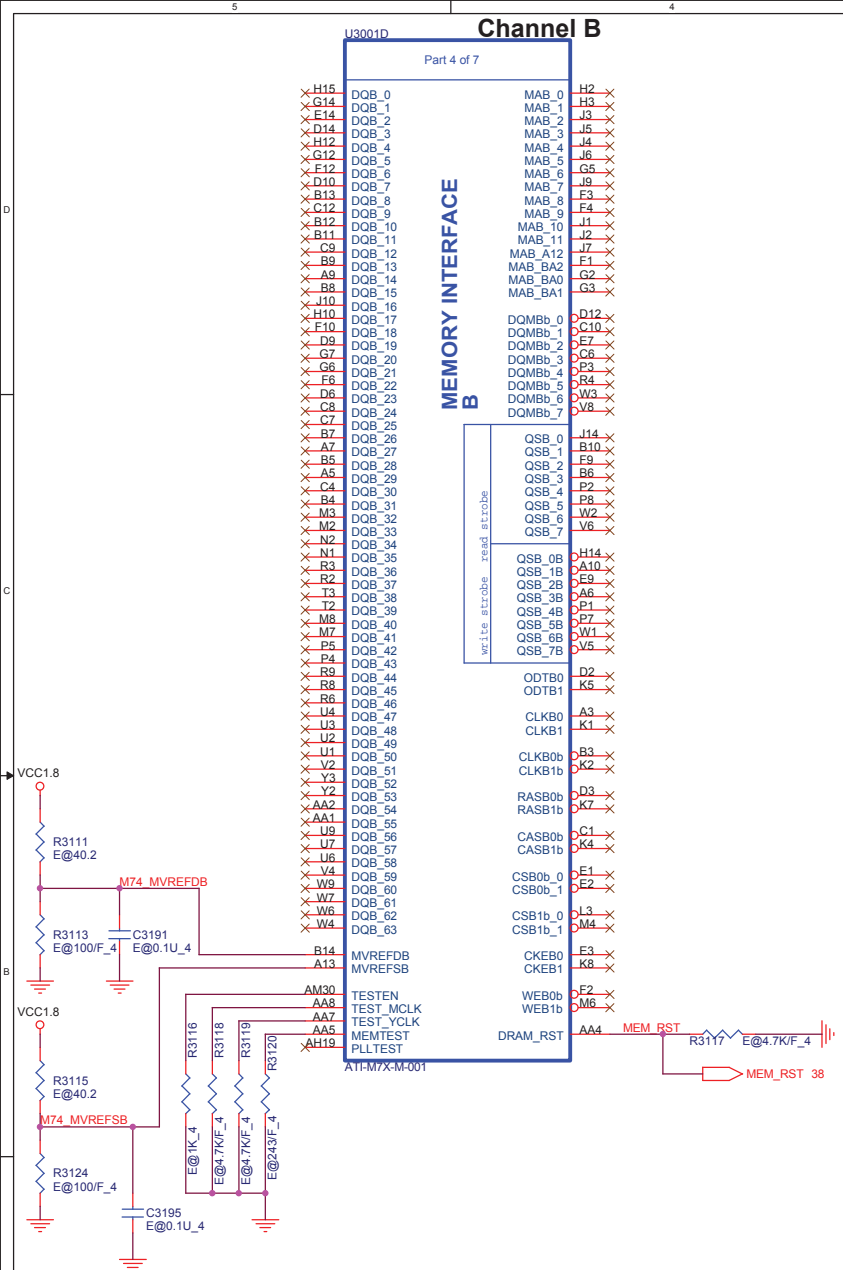


Signal	DDR1,2	DDR3
MVREF to 1.8V	100R	40.2R
MVREF to GND	100R	100R

1. Level 1 Environment-related Substances should NEVER be Used.
2. Purchase ink, paint, wire rods, and Molding resins only from the business Partners that Sony approves as Green Partners.

**QUANTA
COMPUTER**

Size	Document Number	Rev
	WKx ATI M71 VRAM	1A
Date:	Wednesday, December 27, 2006	Sheet 38 of 39



signal		DDR1,2	GDDR3
MVREF to 1.8V		100R	40.2R
MVREF to GND		100R	100R